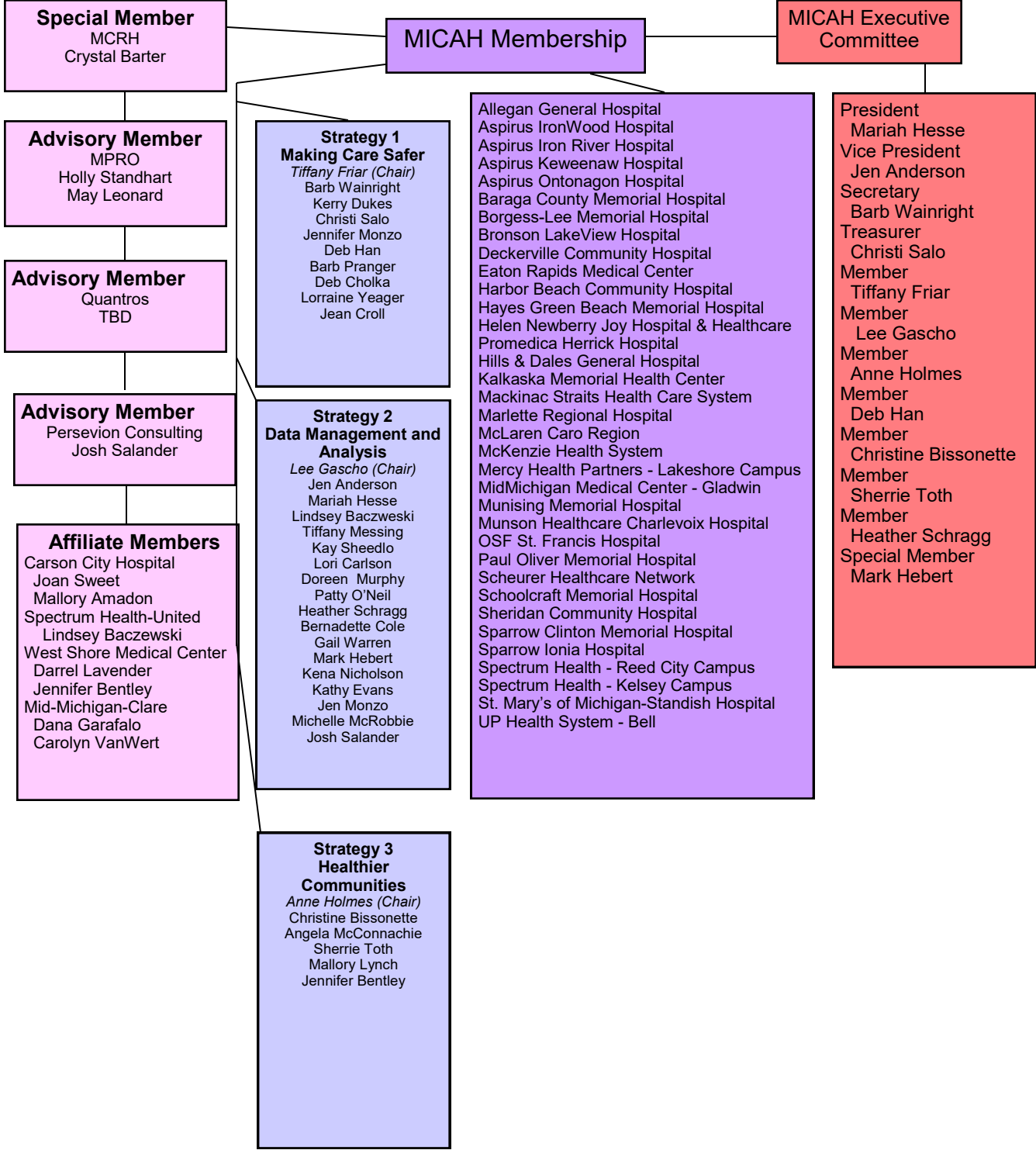


Michigan Critical Access Hospitals (MICAH) Quality Network Organizational Chart 2018



Special Member
MCRH
Crystal Barter

Advisory Member
MPRO
Holly Standhart
May Leonard

Advisory Member
Quantros
TBD

Advisory Member
Persevion Consulting
Josh Salander

Affiliate Members
Carson City Hospital
Joan Sweet
Mallory Amadon
Spectrum Health-United
Lindsey Baczewski
West Shore Medical Center
Darrel Lavender
Jennifer Bentley
Mid-Michigan-Clare
Dana Garafalo
Carolyn VanWert

MICAH Membership

**Strategy 1
Making Care Safer**
Tiffany Friar (Chair)
Barb Wainright
Kerry Dukes
Christi Salo
Jennifer Monzo
Deb Han
Barb Pranger
Deb Cholka
Lorraine Yeager
Jean Croll

**Strategy 2
Data Management and Analysis**
Lee Gascho (Chair)
Jen Anderson
Mariah Hesse
Lindsey Baczewski
Tiffany Messing
Kay Sheedlo
Lori Carlson
Doreen Murphy
Patty O'Neil
Heather Schragg
Bernadette Cole
Gail Warren
Mark Hebert
Kena Nicholson
Kathy Evans
Jen Monzo
Michelle McRobbie
Josh Salander

**Strategy 3
Healthier Communities**
Anne Holmes (Chair)
Christine Bissonette
Angela McConnachie
Sherrie Toth
Mallory Lynch
Jennifer Bentley

Allegan General Hospital
Aspirus IronWood Hospital
Aspirus Iron River Hospital
Aspirus Keweenaw Hospital
Aspirus Ontonagon Hospital
Baraga County Memorial Hospital
Borgess-Lee Memorial Hospital
Bronson LakeView Hospital
Deckerville Community Hospital
Eaton Rapids Medical Center
Harbor Beach Community Hospital
Hayes Green Beach Memorial Hospital
Helen Newberry Joy Hospital & Healthcare
Promedica Herrick Hospital
Hills & Dales General Hospital
Kalkaska Memorial Health Center
Mackinac Straits Health Care System
Marlette Regional Hospital
McLaren Caro Region
McKenzie Health System
Mercy Health Partners - Lakeshore Campus
MidMichigan Medical Center - Gladwin
Munising Memorial Hospital
Munson Healthcare Charlevoix Hospital
OSF St. Francis Hospital
Paul Oliver Memorial Hospital
Scheurer Healthcare Network
Schoolcraft Memorial Hospital
Sheridan Community Hospital
Sparrow Clinton Memorial Hospital
Sparrow Ionia Hospital
Spectrum Health - Reed City Campus
Spectrum Health - Kelsey Campus
St. Mary's of Michigan-Standish Hospital
UP Health System - Bell

MICAH Executive Committee

President
Mariah Hesse
Vice President
Jen Anderson
Secretary
Barb Wainright
Treasurer
Christi Salo
Member
Tiffany Friar
Member
Lee Gascho
Member
Anne Holmes
Member
Deb Han
Member
Christine Bissonette
Member
Sherrie Toth
Member
Heather Schragg
Special Member
Mark Hebert