

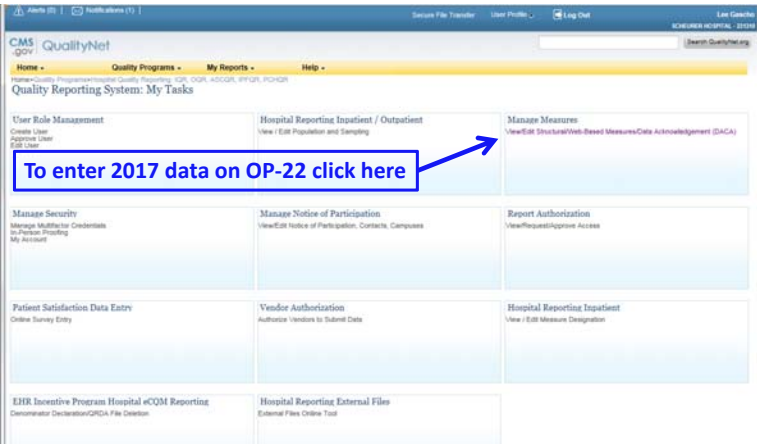
OP-22 ED-Left Without Being Seen

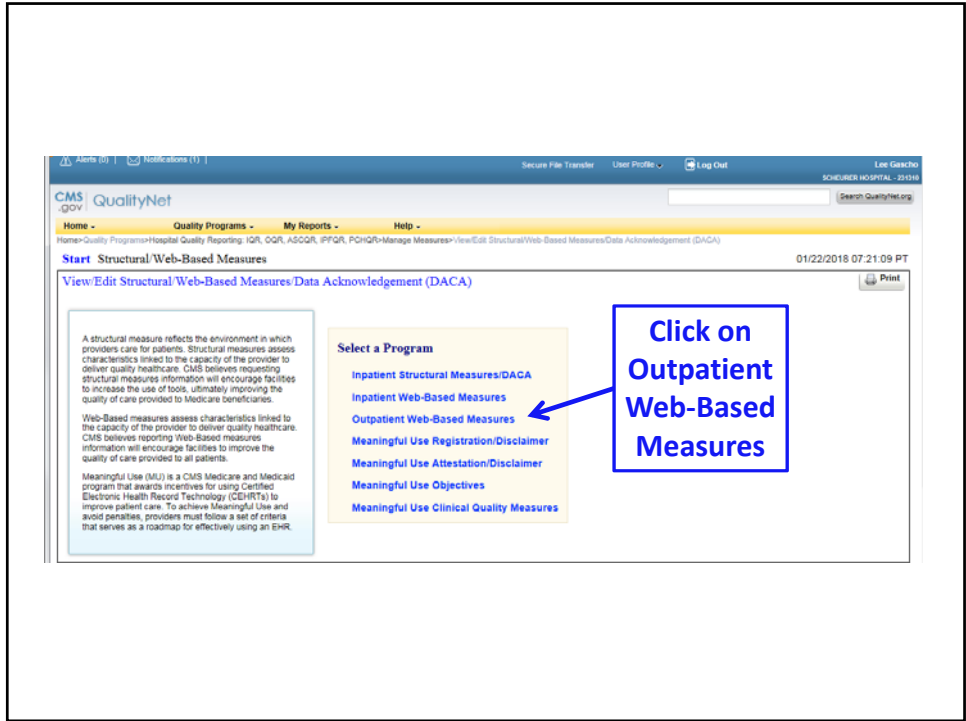
REQUIRED MEASURES FOR MI PEER GROUP 5 CAHS January 2018				
Measure #	Narrative	MBQIP	BCBSM	HIIN
OP -22	ED-Left Without Being Seen	X		

INPATIENT QUALITY REPORTING MEASURES	SUBMISSION METHOD	QUARTERLY SUBMISSION DEADLINES
OP -22 ED-Left Without Being Seen	Enter your data directly into QNet Web-Based tool- Outpatient Web-Based Measures	Annually - Due May 15th Note: You are entering for Payment Year (PY) 2019

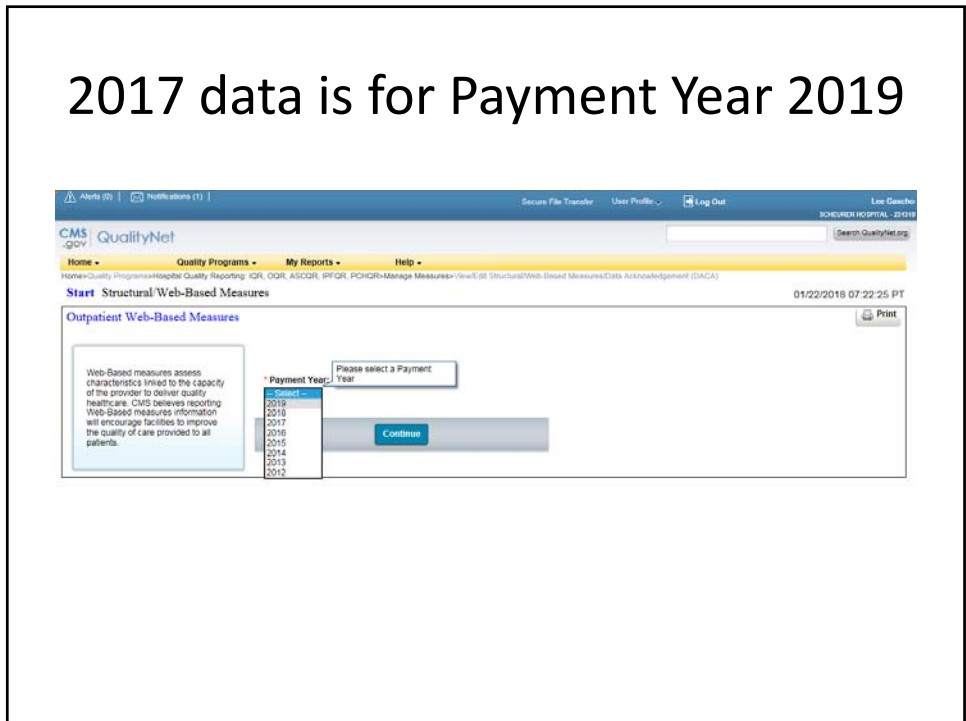
Due by May 15th

OP-22 ED-Left Without Being Seen





2017 data is for Payment Year 2019



Alerts (0) | Notifications (1) | Secure File Transfer | User Profile | Log Out | Lee Garcia | SCHUBER HOSPITAL - 21310 | Search QualityNet.org

CMS QualityNet

Home - Quality Programs - My Reports - Help -

Home > Quality Programs > Hospital Quality Reporting - IQR, OQR, ASCQR, IPFQR, PCHQR > Manage Measures > View/Edit Structural/ Web-Based Measures > Data Acknowledgement (DACA)

Start Structural Web-Based Measures 01/22/2018 07:22:48PT

Outpatient Web-Based Measures [Print](#)

Submission Period: 01/01/2018 - 05/15/2018
With Respect to Reporting Period: 01/01/2017 - 12/31/2017

Web-Based Measures | PY 2019

Provider ID	OP-12	OP-17	OP-22	OP-25	OP-26	OP-29	OP-30	OP-31
231310	Completed	Completed	Completed	Completed	Incomplete	Incomplete	Incomplete	Incomplete

[Click on OP-22](#)

[Back](#) [Payment Year Selection](#)