



# Connecting to Community Resources

DARCY DONNELLY, RN, MSN, CPPS, CPHQ  
DIRECTOR OF NURSING  
ASPIRUS KEWEENAW HOSPITAL

# Social Determinants of Health (SDoH)

- ▶ JC \*New\* January 1, 2023
- ▶ CMS \*New\* Required reporting January 1, 2024

## Joint Commission:

[https://www.jointcommission.org/-/media/tjc/documents/standards/r3-reports/r3\\_disparities\\_july2022-6-20-2022.pdf](https://www.jointcommission.org/-/media/tjc/documents/standards/r3-reports/r3_disparities_july2022-6-20-2022.pdf)

## CMS:

<https://www.cms.gov/About-CMS/Agency-Information/OMH/health-equity-programs/cms-framework-for-health-equity>

<https://blog.medisol.com/articles/intro-cms-sdoh-measures>

# R<sup>3</sup> R

A complimentary put

Published for Joint C references that The. a rationale, R3 Repo provide the evidence delivery.

## New Require

Effective January in the Joint Comm hospital, and hos

- A new standa developed to to the followi
  - All critica
  - Ambulatc ambulatc care, der
  - Behavior Treatment Physical

- The Record o information h
  - Ambulatc
  - Behavior
  - Critical a

- The Rights ar

RI.01.01.01, EP 29) will apply to all Joint Commission–accredited ambulatory health care organizations and behavioral health care and human services organizations.

**CMS Framework for Health Equity 2022–2032**

**Definition of Health Equity**

The attainment of the highest level of health for all people, where everyone has a fair and just opportunity to attain their optimal health regardless of race, ethnicity, disability, sexual orientation, gender identity, socioeconomic status, geography, preferred language, or other factors that affect access to care and health outcomes. CMS is working to advance health equity by designing, implementing, and operationalizing policies and programs that support health for all the people served by our programs, eliminating avoidable differences in health outcomes experienced by people who are disadvantaged or underserved, and providing the care and support that our enrollees need to thrive.

**CMS Framework for Health Equity Priorities**

- Priority 1:** Expand the Collection, Reporting, and Analysis of Standardized Data
- Priority 2:** Assess Causes of Disparities Within CMS Programs, and Address Inequities in Policies and Operations to Close Gaps
- Priority 3:** Build Capacity of Health Care Organizations and the Workforce to Reduce Health and Health Care Disparities
- Priority 4:** Advance Language Access, Health Literacy, and the Provision of Culturally Tailored Services
- Priority 5:** Increase All Forms of Accessibility to Health Care Services and Coverage

To read the CMS Framework for Health Equity 2022-2032, visit [go.cms.gov/framework](https://www.cms.gov/framework).

**“As the nation’s largest health insurer, the Centers for Medicare & Medicaid Services has a critical role to play in driving the next decade of health equity for people who are underserved. Our unwavering commitment to advancing health equity will help foster a health care system that benefits all for generations to come.”**

**Dr. LaShawn McIver,**  
Director, CMS Office of Minority Health

# Community Connection



- ▶ Community Organizations
- ▶ Clinics (by the time they seek help from health care, something is already wrong)
- ▶ After hospitalization, what happens?
- ▶ Many organizations have some sort of mental health offering, but no one-stop shop for the family and often no one coordinating the resources.
- ▶ How do we become knowledgeable about the resources we have to make valuable connections to meet people where they are at?

# Behavioral Health

County Mental Health agency

DHHS

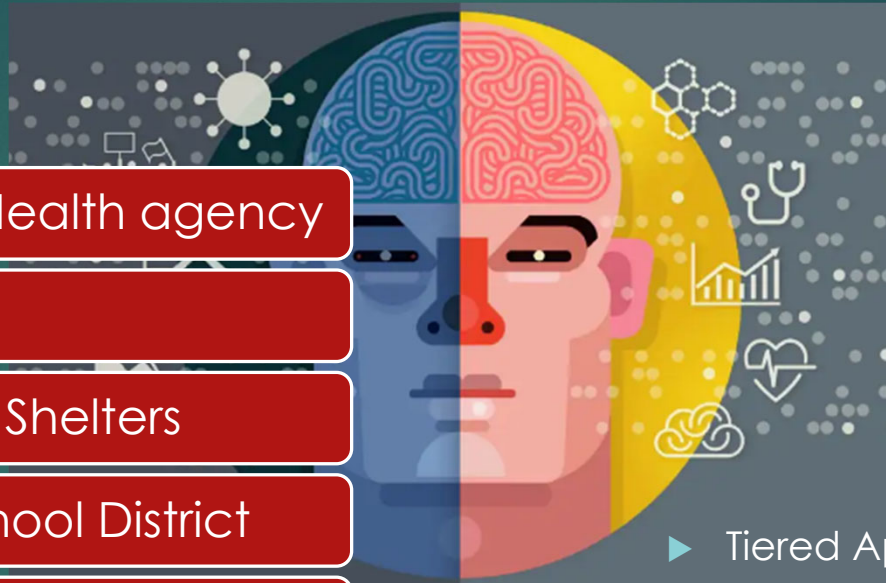
Domestic Abuse Shelters

Intermediate School District

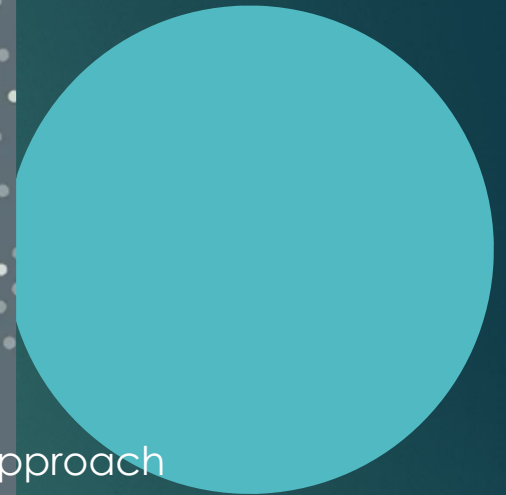
Recovery Centers

Community Youth Programs

Adoption Services



- ▶ Tiered Approach
  - ▶ *Phone, Telehealth, Apps*
- ▶ Counseling vs Social Work vs Medical
- ▶ Community Paramedics
- ▶ Pre-hospital EMS
- ▶ Escalation to Crisis services

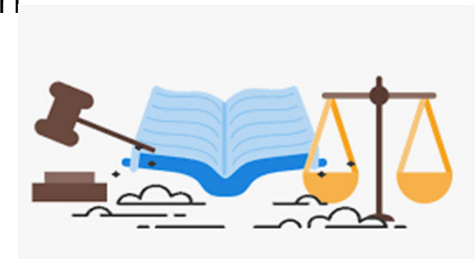


# Community Health Needs Assessment

Community Health Improvement Plan



- ▶ Financial Stress
- ▶ Housing
- ▶ Transportation
- ▶ Legal
- ▶ Family Support
- ▶ Caregiver Support



# What's next?

- ▶ Look for a community event that has many partners attending & form relationships
- ▶ Host a community event at your facility and partner with local businesses, police department, DHHS office, etc.
- ▶ Encourage Care Coordination or Social Work to meet with community partners as part of regular work
- ▶ Seek out a Board seat for a non-healthcare entity
- ▶ Talk with local schools about services their students and families would benefit from