

The background features a light purple-to-blue gradient. Scattered throughout are various-sized, realistic-looking water droplets with highlights and shadows. In the center, there is a faint, large circular graphic with a white-to-purple gradient, resembling a stylized sun or moon.

4Q 2022 CORE MEASURES, 4Q MBQIP DATA REPORTS & 2Q 2023 EDTC REPORT

MICAH QN



Any information included in the following reports is for quality improvement and benchmarking purposes only.



The information in this report is based on data obtained from Quantros, and MBQIP.

MICAH TOP PERFORMERS

4Q 2022					
<u>Measure</u>	<u># Hospitals</u>	<u>Denominator</u>	<u>Current Rate/Value</u>		<u>Top Performers</u>
OP-2	38	25	60.0%		MyMichigan-Clare, Schoolcraft, Standish, Mackinac Straits, Baraga, Harbor Beach, Keweenaw, Eaton Rapids, & Marlette
OP-3b	38	12	56		MyMichigan Medical Center-Clare, followed by Corewell Health -Spectrum Reed City, and then by Sparrow Ionia
OP-18b	38	3570	118		McLaren Caro Region, followed by Ascension Borgess Lee, and then by Hills & Dales General Hospital

All EDTC Measures



Michigan

State-Level Care Transition Core Measures/EDTC Report

Quarter 4 - 2022

Generated on 03/31/23

MBQIP Quality Measure	Your State's Performance by Quarter					State Current Quarter			National Current Quarter		Benchmark
	Q1 2022	Q2 2022	Q3 2022	Q4 2022	Aggregate for All Four Quarters	# CAHs Reporting	Average Current Quarter	90th Percentile	# CAHs Reporting	Average Current Quarter	Average Current Quarter
EDTC-All Composite	93%	93%	93%	93%	93%	32	93%	100%	1,178	90%	100%
Home Medications	95%	96%	96%	96%	96%	32	96%	100%	1,178	94%	100%
Allergies and/or Reactions	98%	99%	98%	98%	98%	32	98%	100%	1,178	96%	100%
Medications Administered in ED	98%	99%	99%	98%	98%	32	98%	100%	1,178	96%	100%
ED Provider Note	96%	97%	97%	96%	97%	32	96%	100%	1,178	95%	100%
Mental Status/Orientation Assessment	97%	99%	98%	97%	98%	32	97%	100%	1,178	96%	100%
Reason for Transfer and/or Plan of Care	99%	100%	99%	99%	99%	32	99%	100%	1,178	97%	100%
Tests and/or Procedures Performed	98%	99%	98%	98%	99%	32	98%	100%	1,178	96%	100%
Tests and/or Procedures Results	98%	99%	98%	98%	98%	32	98%	100%	1,178	96%	100%
Total Medical Records Reviewed (N)	N=1,419	N=1,382	N=1,429	N=1,372	N=5,602	N=1,372			N=48,876		

“N/A” indicates that no CAH data were submitted for this state.

Michigan

State-Level Patient Safety/Inpatient and Outpatient MBQIP Core Measures Report

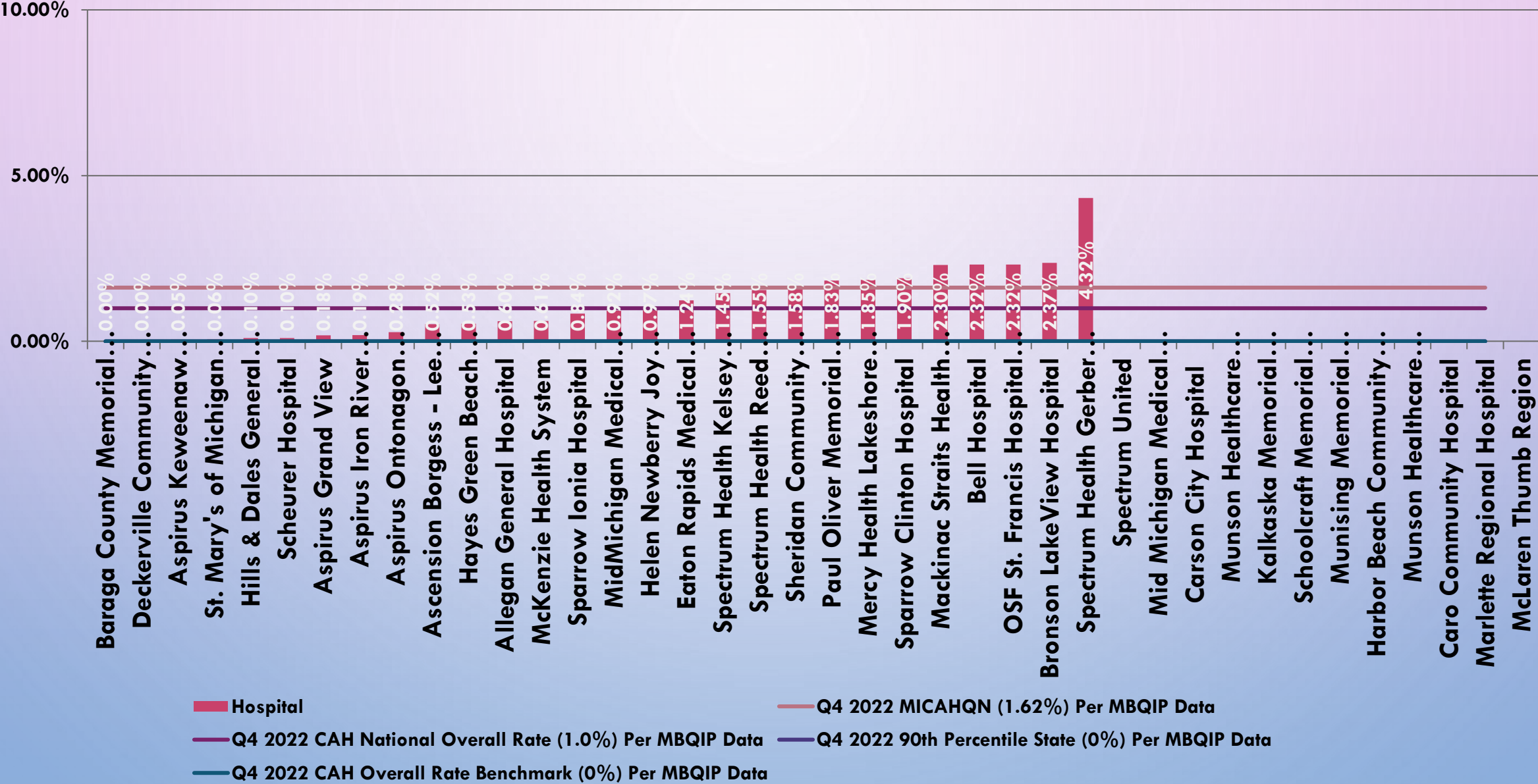
Quarter 4 - 2022

Generated on 06/16/23

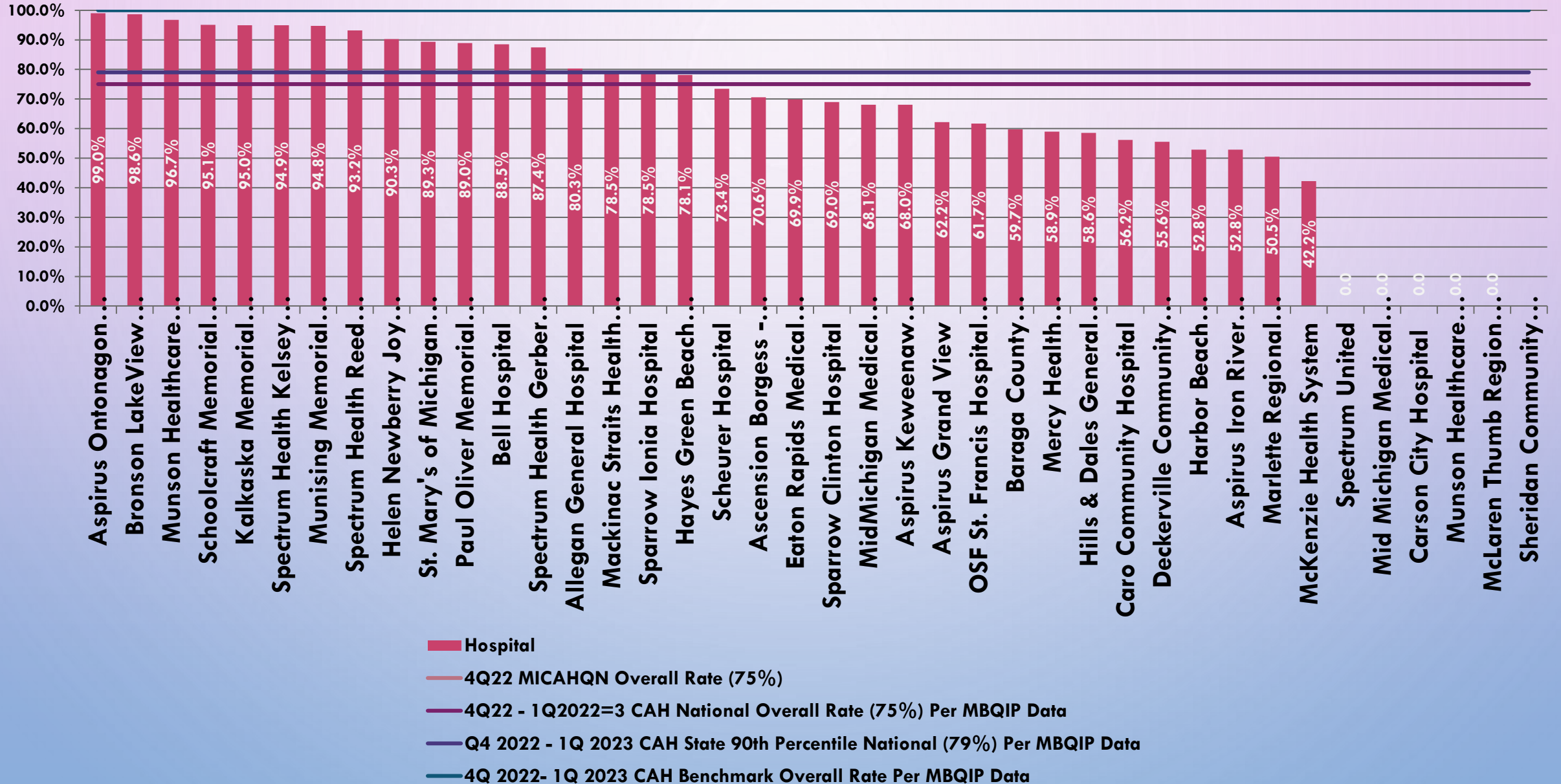
	State Percentage by Survey Year		State Percentage for Current Survey Year		National Percentage for Current Survey Year		Benchmark
	Survey Year 2021	Survey Year 2022	# CAHs Reporting	% of CAHs Meeting Element	# CAHs Reporting	% of CAHs Meeting Element	% of CAHs Meeting Element
Antibiotic Stewardship Measure – CDC Core Elements							
All Elements Met	94%	94%	34	94%	1,237	91%	100%
Element 1: Leadership	94%	97%	34	97%	1,237	98%	100%
Element 2: Accountability	97%	97%	34	97%	1,237	97%	100%
Element 3: Drug Expertise	100%	97%	34	97%	1,237	95%	100%
Element 4: Action	100%	100%	34	100%	1,237	98%	100%
Element 5: Tracking	97%	100%	34	100%	1,237	96%	100%
Element 6: Reporting	100%	100%	34	100%	1,237	98%	100%
Element 7: Education	100%	100%	34	100%	1,237	99%	100%

“N/A” indicates that no CAHs in the state submitted data for this measure.

OP 22 Patient Left Without Being Seen:



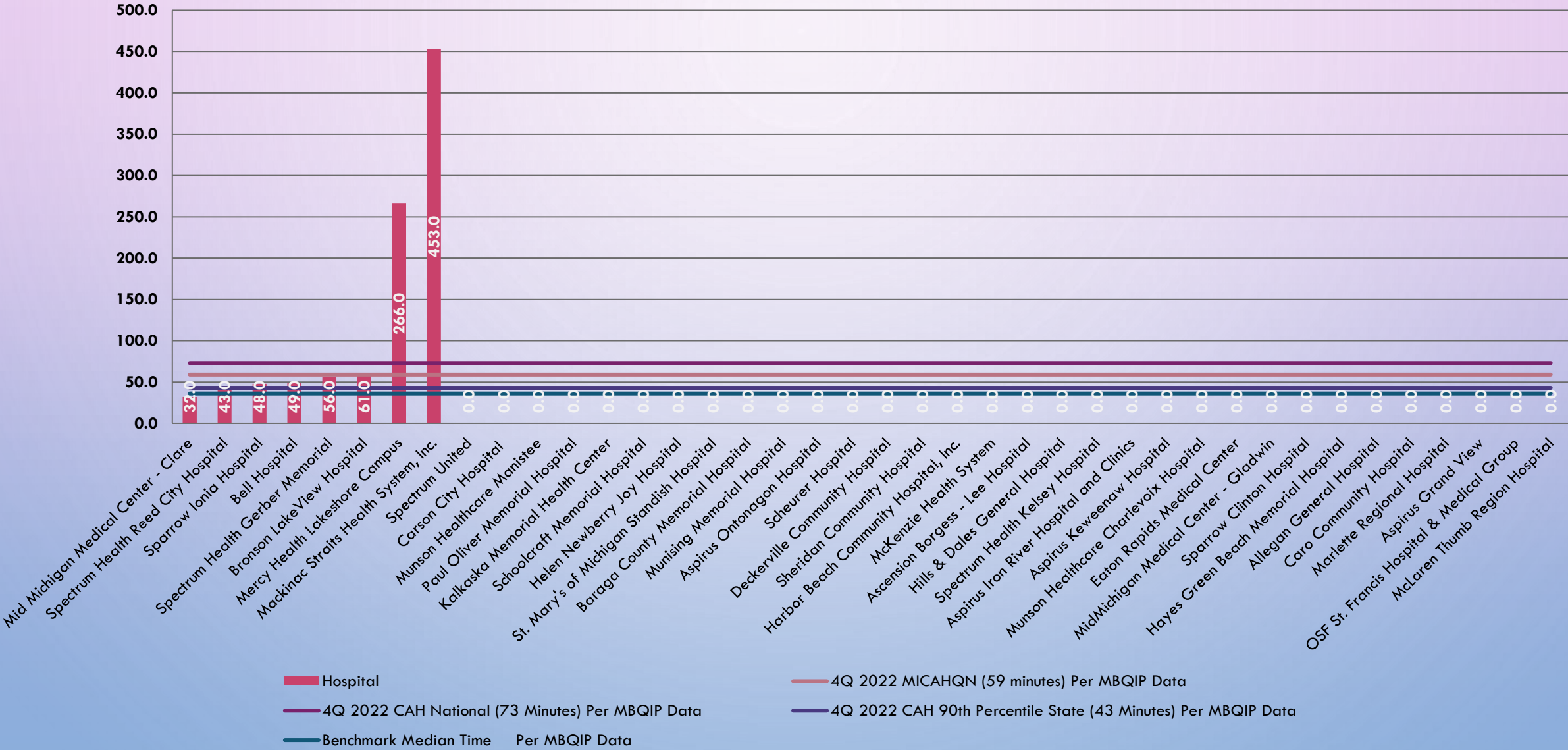
HCP/IMM-3: Healthcare Provider Influenza Vaccination



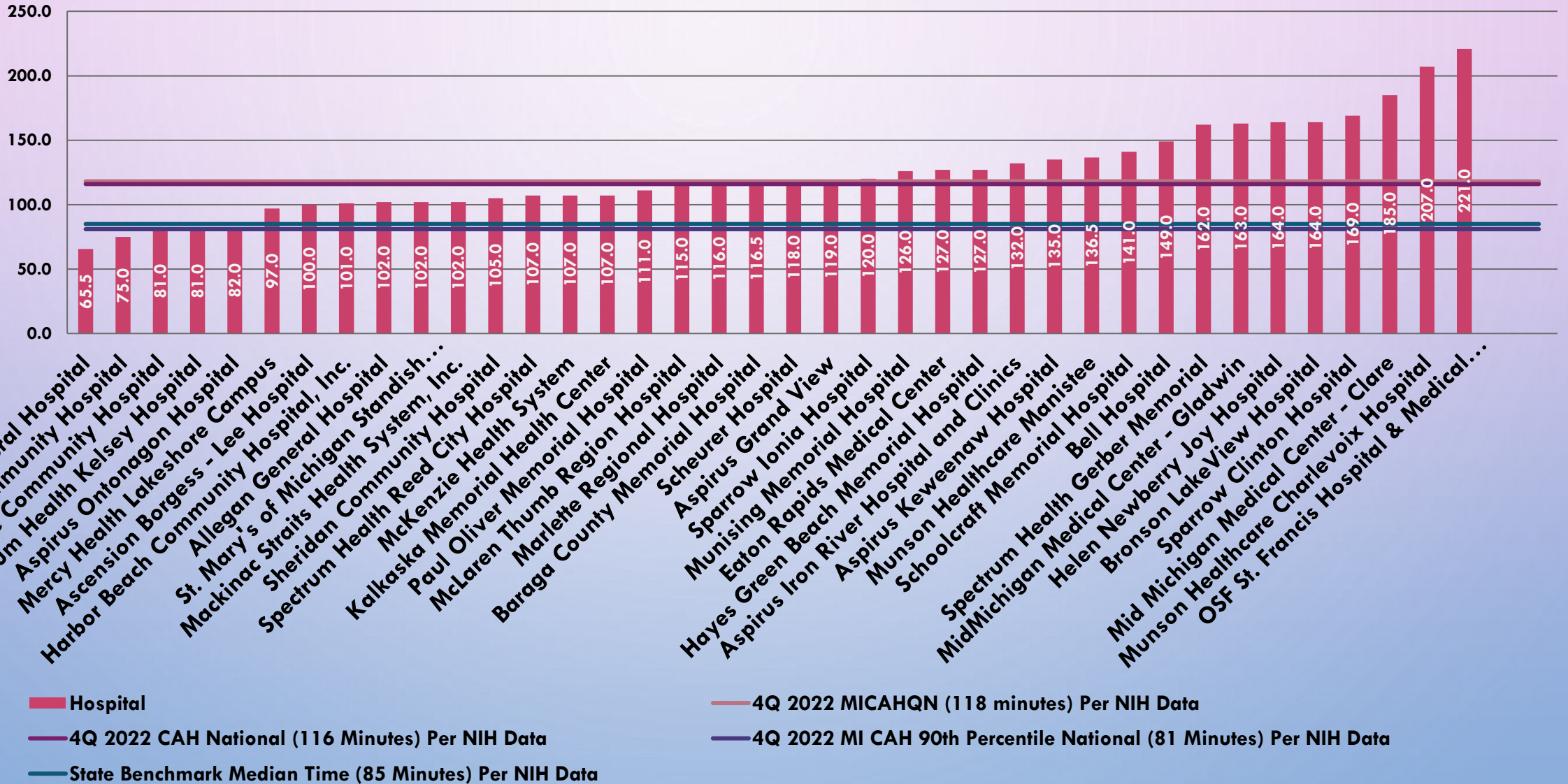
OP-2: Fibrinolytic Therapy Received Within 30 Minutes



OP-3b: Median Time to Transfer to Another Facility for Acute Coronary Intervention - Reporting Measure



OP-18b: Median Time from ED Arrival to ED Departure for Discharged ED Patients - Reporting Measure





Thank you!

Jeff Nagy

MCRH

Jeff.nagy@affiliate.msu.edu