

# MiHIN's MIGateway Conformance Module Overview

Megan Gibbs  
Krystal Schramm



# Table of Contents

- Who is MiHIN?
- History of Conformance
- MiGateway Conformance Module
  - Demonstration by Krystal Schramm

# Meet Your MiHIN Team



Megan Gibbs

**Director of  
Customer Success**



Krystal Schramm

**Senior Technical  
Business Analyst**

# Michigan Health Information Network Shared Services (MiHIN)

MiHIN is Michigan's state-designated entity to continuously improve healthcare quality, efficiency, and patient safety by promoting secure, electronic exchange of health information. MiHIN represents a growing network of public and private organizations working to overcome data sharing barriers, reduce costs, and ultimately advance the health of Michigan's population.



# Brief History: Michigan Health Information Network Shared Services

Federal Office of National Coordinator establishes State Health Information Exchange Cooperative Agreement Program

Michigan forms **Health Information Technology Commission**, which establishes MiHIN.

*Active Care Relationship Service (ACRS) and Admission Discharge, Transfer (ADT) Notifications go live*

## 97%

of **Admissions Discharge Transfer Notifications** statewide sent through MiHIN

**Common Key Service** introduced for patient matching

## 131,133,812

cumulative **Immunization** Queries

Velatura Public Benefit Corporation and Interoperability Institute established



2010 — 2012 — 2013 — 2014 — 2016 — 2017 — 2019 — 2020 — 2022 →

More than

## 100 M

messages routed through statewide network

More than

## 1 BILLION

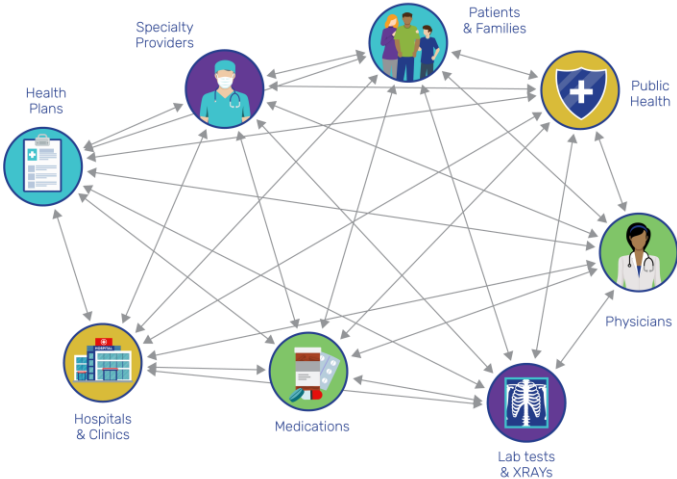
messages routed through statewide network

MiHIN completes its corporate affiliation of Great Lakes Health Connect (GLHC)

# Statewide Health Information Exchange Creates Efficiency

## BEFORE:

Duplication of effort, waste and expense



## NOW:

Connect once to access shared services



# The History of Conformance

2015 to 2023



# Hospital Pay-for-Performance

- Blue Cross Blue Shield of Michigan (BCBSM) has two hospital incentive-based programs; pay-for-performance, or P4P.
  - Both programs recognize hospitals that excel at care quality, cost-efficiency and population health management.
- BCBSM split these programs based on hospital size.
  - Large and medium-sized hospitals
    - Peer groups 1-4
    - Can earn up to an extra 5% toward their operating costs.
  - Small, rural hospitals
    - Can show value to their community by meeting expectations for care access, quality, and effectiveness.



# Path to Production

Pre-Onboarding



*Sending ADT Notifications*

Onboarding – Phase 1



Onboarding – Phase 2



# Path to Production

*Sending ADT Notifications*

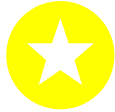


**Pre-Production**

*Test data flow complete*

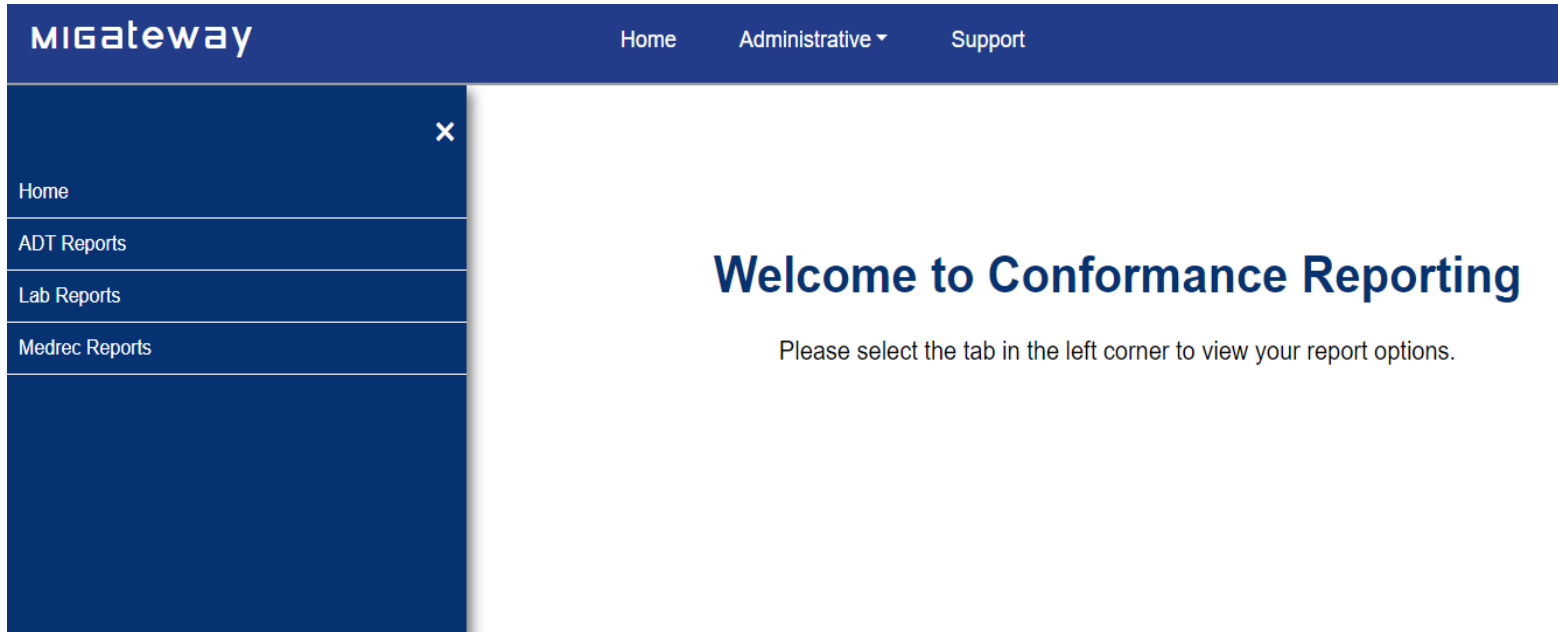


**Data Quality Assurance**



**Production**  
*Production data flow complete*

# MIGateway Conformance Module



MIGateway

Home Administrative Support

Home

ADT Reports

Lab Reports

Medrec Reports

## Welcome to Conformance Reporting

Please select the tab in the left corner to view your report options.

# MIGateway Conformance Module

## *ADT Conformance Reports*

### ADT Conformance Reports

Please select from the following report options:

[ADT Conformance Overview for Hospitals](#)

[ADT Conformance Report for SNFs](#)

[ADT Conformance Report for Hospitals](#)

[ADT Fallout Report](#)

# MI Gateway Conformance Module

*Lab Conformance Reports*

## Lab Conformance Reports

Please select from the following report options:

Statewide Lab Conformance Report

# MI Gateway Conformance Module

## *Med Rec Conformance Reports*

### MedRec Conformance Reports

Please select from the following report options:

MedRec Conformance Report

MedRec Fallout Report

# Data Quality Assurance

## MI Gateway Conformance Module

Hospital System Conformance



December 2015 snapshot shows one health system by individual hospitals resulting in additional rows

April		
Fields populated	Fields mapped	Enhanced fields
100.0%	100.0%	0.0%
63.6%	53.8%	0.0%
81.8%	53.8%	33.3%
90.9%	61.5%	0.0%
100.0%	38.5%	0.0%
90.9%	92.3%	0.0%
54.5%	15.4%	0.0%
54.5%	15.4%	0.0%
100.0%	0.0%	33.3%
90.9%	61.5%	0.0%
90.9%	76.9%	33.3%
90.9%	23.1%	0.0%
63.6%	69.2%	0.0%
63.6%	92.3%	0.0%
63.6%	0.0%	0.0%
63.6%	38.5%	33.3%
90.9%	92.3%	33.3%
63.6%	53.8%	0.0%
90.9%	92.3%	0.0%
90.9%	38.5%	33.3%
63.6%	38.5%	33.3%
81.8%	23.1%	0.0%
63.6%	53.8%	0.0%
81.8%	69.2%	33.3%



December		
Fields populated	Fields mapped	Enhanced fields
100.0%	100.0%	100.0%
100.0%	100.0%	66.7%
100.0%	0.0%	33.3%
72.7%	100.0%	66.7%
100.0%	100.0%	66.7%
100.0%	100.0%	100.0%
90.9%	100.0%	100.0%
100.0%	92.3%	66.7%
100.0%	100.0%	66.7%
100.0%	100.0%	100.0%
100.0%	100.0%	100.0%
100.0%	100.0%	100.0%
100.0%	100.0%	66.7%
100.0%	100.0%	100.0%
100.0%	76.9%	66.7%
72.7%	100.0%	66.7%
63.6%	84.6%	66.7%
100.0%	92.3%	100.0%
100.0%	100.0%	33.3%
100.0%	53.8%	33.3%
100.0%	100.0%	66.7%
100.0%	84.6%	66.7%
100.0%	100.0%	66.7%
63.6%	92.3%	0.0%
72.7%	69.2%	66.7%
90.9%	100.0%	33.3%
100.0%	100.0%	66.7%

LEGEND

- Poor Conformance
- At-Risk Conformance
- Meets Conformance

# Drill Down ADT Conformance

### Overall Conformance Score

81.5%

Population Rates: Routing Field Data

PID-3.1 (CK)	PID-5.1	PID-5.2	PID-7	PID-11.5	PID-29	PID-30	PV1-37	PV1-44	PV1-45	IN1-3	IN1-4	PV1-19
94.3%	100.0%	100.0%	100.0%	99.9%	100.0%	100.0%	82.0%	100.0%	99.0%	99.8%	100.0%	100.0%

Population Rates: Normalization/Mapping Field Data

PID-8	PID-10	PID-22	PV1-2	PV1-4 (I)	PV1-10	PV1-14 (I)	PV1-36 (IE)	DG1-6 (IE)	MSH-4
100.0%	93.0%	98.9%	100.0%	100.0%	100.0%	99.4%	100.0%	88.0%	100.0%

Mapping Rates: Normalization/Mapping Field Data

PID-8	PID-10	PID-22	PV1-2	PV1-4	PV1-10	PV1-14	PV1-36	DG1-6	MSH-4
100.0%	100.0%	100.0%	100.0%	100.0%	100.0%	100.0%	100.0%	100.0%	100.0%

### Overall ADT Conformance Score

Indicates overall ADT data quality.  
Color-coded by field's conformance (Population, Mapping, etc).  
0-14 (Red); 15-26 (Yellow); 27 (Green) for Peer Group 1-4 facilities;  
0-14 (Red); 15-23 (Yellow); 26 (Green) for Peer Group 3 facilities.

Complete Routing Data by Field

Population rates for ADT fields relevant to routing.  
Should no ADTs including a given segment be sent, routing data for that segment is considered to be complete.

Complete Mapping Data by Field

Rates at which the populated values of each message segment conform to the ADT service specifications.  
When evaluating each field for overall conformance, both the field's population rate and the mapping rate of its populated contents to the ADT service standard are considered.  
Should no ADTs including a given mapped segment be sent, mapping for that segment is considered to be failed.

Adherence to Coding Standards by Field

Rates at which the populated values of each message segment contain values properly formatted for that segment (e.g. ICD-10 diagnosis codes, etc.).  
When evaluating each field for overall conformance, both the field's population rate and the rate at which its values were properly formatted for the segment are considered.  
Should no ADTs including a given mapped segment be sent, adherence for that segment is considered to be failed.

Population Rates: Coding Standard Conformance Field Data

DG1-3.1 (IE)	DG1-3.2 (IE)	PV1-7 (IE)	PV1-17 (I)
88.0%	88.0%	93.3%	97.7%

Proper Coding Rates: Coding Standards Conformance Field Data

DG1-3.1	DG1-3.2	PV1-7	PV1-17
100.0%	100.0%	100.0%	100.0%



### Overall Conformance Score

100.0%

Population Rates: Routing Field Data

PID-3.1 (CK)	PID-5.1	PID-5.2	PID-7	PID-11.5	PID-29	PID-30	PV1-37	PV1-44	PV1-45	IN1-3	IN1-4	PV1-19
96.9%	100.0%	100.0%	100.0%	100.0%	100.0%	100.0%	99.6%	100.0%	99.4%	100.0%	100.0%	100.0%

Population Rates: Normalization/Mapping Field Data

PID-8	PID-10	PID-22	PV1-2	PV1-4 (I)	PV1-10	PV1-14 (I)	PV1-36 (IE)	DG1-6 (IE)	MSH-4
100.0%	100.0%	100.0%	100.0%	100.0%	100.0%	100.0%	99.6%	99.2%	100.0%

Mapping Rates: Normalization/Mapping Field Data

PID-8	PID-10	PID-22	PV1-2	PV1-4	PV1-10	PV1-14	PV1-36	DG1-6	MSH-4
100.0%	100.0%	100.0%	100.0%	100.0%	99.7%	100.0%	100.0%	100.0%	100.0%

Population Rates: Coding Standard Conformance Field Data

DG1-3.1 (IE)	DG1-3.2 (IE)	PV1-7 (IE)	PV1-17 (I)
99.2%	99.2%	98.4%	96.7%

Proper Coding Rates: Coding Standards Conformance Field Data

DG1-3.1	DG1-3.2	PV1-7	PV1-17
100.0%	100.0%	100.0%	100.0%



---

# THANK YOU

---

## LET'S CONNECT



[mihin.org](https://mihin.org)



[@MiHIN](https://twitter.com/MiHIN)



[linkedin.com/company/mihin](https://www.linkedin.com/company/mihin)



[MIGateway Conformance Module User Guide](#)

Megan Gibbs  
Director, Customer Success  
[megan.gibbs@mihin.org](mailto:megan.gibbs@mihin.org)

Krystal Schramm  
Senior Technical Business Analyst  
[krystal.schramm@mihin.org](mailto:krystal.schramm@mihin.org)