

# Michigan Critical Access Hospital Quality Network

---

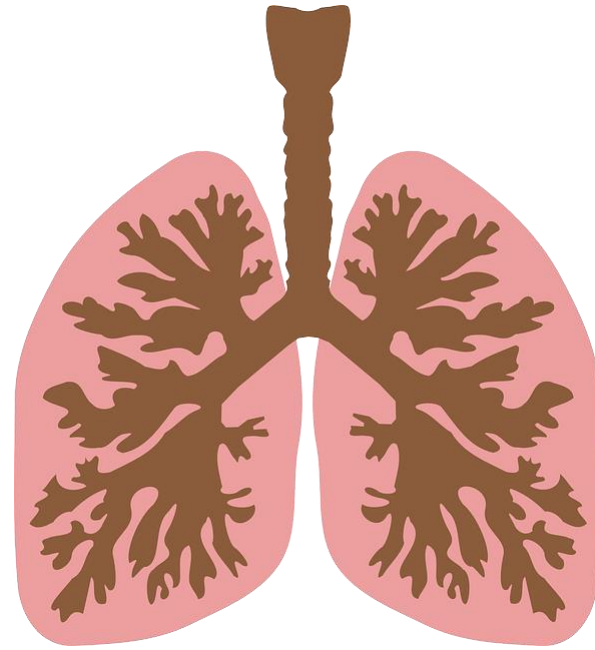
FEBRUARY 19, 2021

# MICAH QN Strategy Group #3

---

PROMOTING EFFECTIVE COMMUNICATION AND  
COORDINATION OF CARE

# Resource Repository



Don't forget to check out the [COPD Resource Repository](#), compiled by Strategy Group #3!

# 2021 Focus

---

## COPD Readmissions – Any Facility

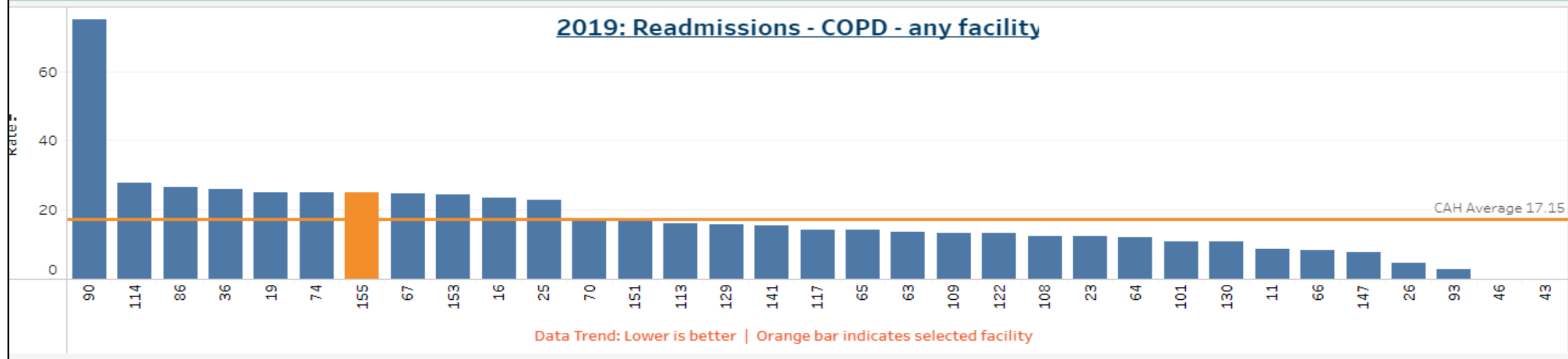
- Have access to data via KeyMetrics dashboard, updated quarterly



## Critical Access Hospital Comparison



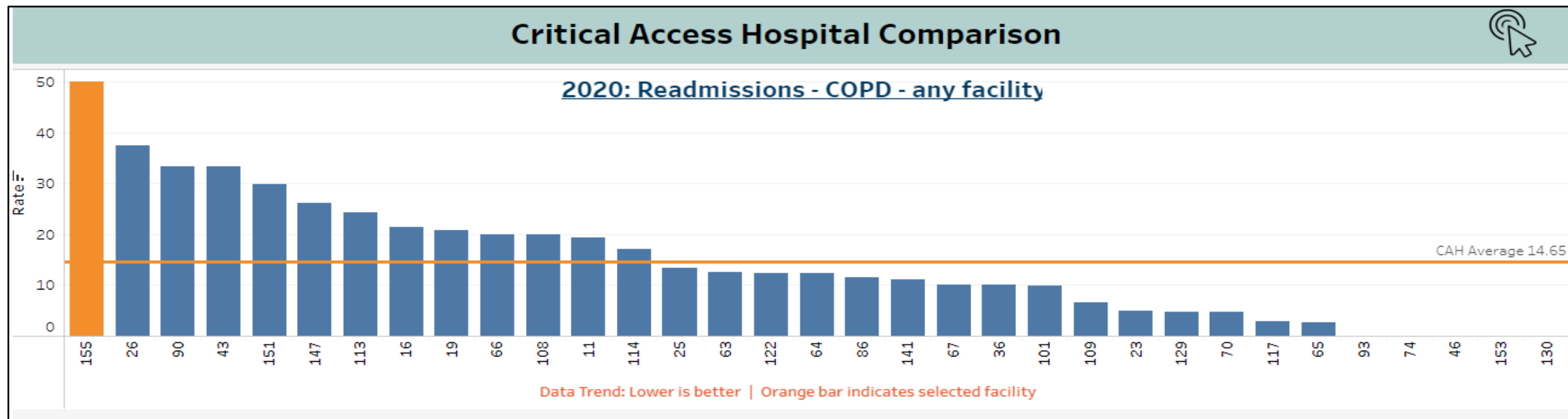
2019: Readmissions - COPD - any facility



## Critical Access Hospital Comparison



2020: Readmissions - COPD - any facility



# Consistent Performers

(CAHs performing at a rate **consistent with or better than MI CAH average 2018 – 2020\***)

KeyMetrics Hospital IDs:

- 46
- 63
- 64
- 65
- 101
- 117
- 122
- 141

\*2020 data is for Q1-Q3 2020 (Q4 not yet available)

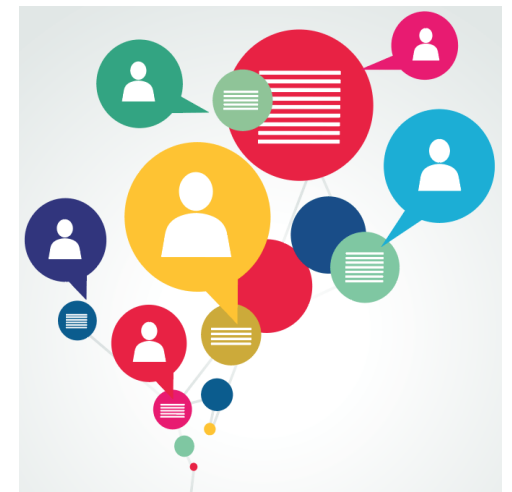


# Discussion

---

To help drive future education/resources:

- Would a panel presentation by consistent performers be helpful? (mix of high and low volume)
- What (if any) COPD readmission data or initiatives is your CAH focusing on?
- What barriers exist that may contribute to COPD readmissions?
  - Lack of patient education, transportation, etc.





# Thank You!

---