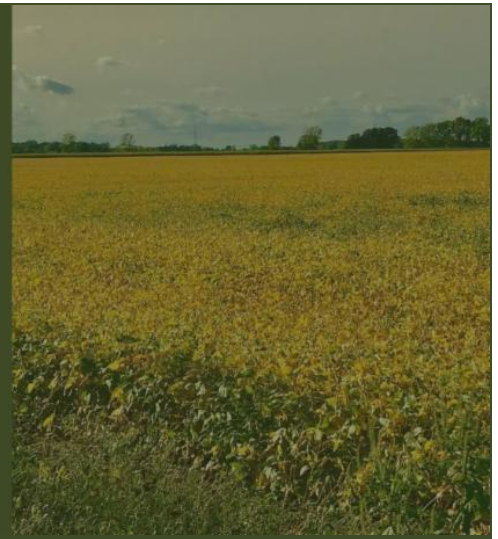




Our Mission:

TO COORDINATE, PLAN,
AND ADVOCATE FOR
IMPROVED HEALTH FOR
MICHIGAN'S RURAL
RESIDENTS AND
COMMUNITIES.



MCRH MONTHLY NEWSLETTER

November 2024
Volume 5, Issue 11

2024 Michigan Critical Access Hospital Conference Wrap Up



MCRH would like to thank all of the attendees, exhibitors, and Park Place Hotel and Conference Center staff in Traverse City for making the 2024 Michigan Critical Access Hospital Conference memorable!

A special thank you goes to the wonderfully insightful speakers who brought useful information and ideas to share with our attendees.

- Brock Slabach, Chief Operations Officer, **National Rural Health Association**
- Jonathan Pantenburg, MHA, Principal, **Wintergreen**
- Jessica Morgan, MSPT, MHA, Senior Director of Operations, **Sheridan Community Hospital**
- Jim Yates, MPA, I-REACH - Veterans Program Manager, **Michigan Center for Rural Health**
- Patrice Olivo, VA Community Care Billing Liaison/Program Specialist, **Saginaw VA Medical Center**
- Carolyn Turvey, PhD, Research Health Scientist, **VA Office of Rural Health**
- Andrew Porter, RN, State Executive Administrator for Michigan, and Rachel Camp, Account Executive, **UP Health System - Marquette Hospice**
- Emily Bergquist, EMT-P I/C, MSA, Director, **Division of EMS and Systems of Care Bureau of Emergency Preparedness, EMS, and Systems of Care, Michigan Department of Health & Human Services**
- Hilary Doe, Chief Growth & Marketing Officer, **Michigan Economic Development Corporation**

- Andrew Heberling, Attorney, **Hall Render**
- Jeffrey Johnson, CPA, Partner, **Wipfli LLP**
- Kara Massa, Director, Clinical Operations, **Higi, a Modivcare service**
- John Foss, PA-C, MBA, Sr. Vice President of Operations, **Trinity Health MI Shelby Hospital /Trinity Health MI Grand Haven Hospital**
- Tiffany Friar, RN, DNP, MBA, RHCCNO Chief Nursing Officer, **University of Michigan Health-Sparrow Eaton Hospital/University of Michigan Health-Sparrow Ionia Hospital**
- Sarah Coker, MSN, RN, BS, Inpatient Manager, **University of Michigan Health-Sparrow Carson Hospital**
- Andy Bertapelle, CEO, **Schoolcraft Memorial Hospital**

Downloads of all 2024 Michigan Critical Access Hospital Conference presentations can be found [HERE](#).

We look forward to a great CAH Conference in 2025!



Thank You To Our Michigan Critical Access Hospital Conference Partners!



MCRH would like to thank all of this year's conference partners for engaging with attendees throughout the event. This year featured 23 exhibitors, conference app partners, and lunch sponsors. MCRH thanks you for your support!

- ARS/Magnet Solutions
- Blue & Co., LLC
- Design Collaborative

- Multiview ERP
- National Kidney Foundation of Michigan

- HELP Financial
- Hall Render
- Juno Health (DSS, Inc.)
- Kode Health
- MDHHS-Division of Environmental Health
- Michigan Health Council
- Michigan Value Collaborative
- Michigan Organization for Nursing Leadership
- MPHI/MDHHS Health Information Technology

- Net Revenue
- OB Hospitalist Group
- Oracle Health
- Prevounce
- Psychiatric Medical Care
- RestorixHealth
- Rural Health Redesign Center (RHRCO)
- RubinBrown, LLP
- UltraGroup Healthcare
- Vigilior
- Wintergreen
- Wintrust

MCRH Hosts Successful Silent Auction Fundraiser Supporting OsteoCHAMPS



Fifteen Michigan Critical Access Hospitals and the Park Place Hotel donated creative and valuable gift baskets for a silent auction during Thursday evening's networking reception at the 2024 Michigan Critical Access Hospital Conference.

The entire MCRH staff wishes to extend our gratitude for helping to make this fun-filled fundraiser for the Michigan State University College of Osteopathic Medicine **OsteoCHAMPS** program an unmitigated success.

This year's auction raised \$2,060!

Through this combined effort, we met our goal of helping send aspiring rural high school students to next summer's OsteoCHAMPS summer camp.

Once again, we thank our silent auction donors and basket winners for helping provide a pathway to a healthcare career for aspirational rural-based young scholars!

- Aspire Rural Health System
- Aspirus Health
- Corewell Health Pennock
- Helen Newberry Joy Hospital and Healthcare Center
- MyMichigan Medical Center Gladwin
- McKenzie Health System
- McLaren Health Care - Thumb/Caro
- Munson Paul Oliver Memorial Hospital

- Scheurer Health
- Schoolcraft Memorial Hospital
- Sheridan Community Hospital
- Mackinac Straits Health System
- Park Place Hotel
- Trinity Health
- UM Health Sparrow Clinton/Carson
- UM Health Sparrow Ionia

Suzanne Prentice is Michigan's 2024 National Rural Health Day Community Star



Suzanne Prentice

Up North Prevention
Live Well Kalkaska Substance Free Coalition

Kalkaska, Michigan

National Rural
Health Day
POWEROFRURAL.ORG



MCRH congratulates Suzanne Prentice, Michigan's 2024 National Rural Health Day Community Star from NOSORH. Suzanne is the founder and coordinator of the Kalkaska-based Live Well Kalkaska Substance Free Coalition, driven by a deep desire to help families affected by substance use disorders (SUD).

Suzanne voluntarily began organizing and coordinating the coalition in 2014 until 2020, when Up North Prevention, an initiative of Catholic Human Services, hired her. In 2021, Suzanne accepted the additional position of Prevention Specialist for Kalkaska County. Suzanne is a board member of the Grand Traverse Regional Chapter of Face Addiction Now (FAN). She co-facilitates their Stronger Together family support group and was trained as a Hope Not Handcuffs Angel for the organization.

Suzanne is also a board member of Before, During, and After Incarceration (BDAl) and the Lead Angel for the Michigan State Police Angel Program in Kalkaska County. She is a core member of the Substance Free Coalition of Northwest Michigan, a member of the Antrim Substance Free Resource Alliance, and a member of the Reduce Stigma Against Substance Use Disorders Action Team through the Northwest Michigan Community Health Innovation Region. Prentice has been CCAR trained as a Recovery Coach and ER Recovery Coach through NMSAS Recovery Center and is a Community Champion in Adverse Childhood Experiences (ACEs).

Recognized for her compassionate approach and unwavering commitment, Suzanne is dedicated to making a meaningful difference in the lives of those

impacted by SUD. Congratulations, Suzanne, on this tremendous honor!

For Suzanne's full Community Star profile, please [click here](#) and click on the State of Michigan when arriving at the website.

Marlette Regional Hospital One of Six Recipients of \$15M Equitable Mobility Challenge



Recently, Michigan Lt. Governor Garlin Gilchrist II joined the Office of Future Mobility and Electrification (OFME) and Michigan Department of Transportation (MDOT) at the inaugural Mobility Conference in Detroit to announce six recipients of the \$15M Equitable Mobility Challenge. Launched in early 2024, the program sought grant proposals that addressed mobility gaps and improved access to education, jobs, health care, food, and social opportunities.

Marlette Regional Hospital, part of the Aspire Rural Health System, was one of six recipients announced.

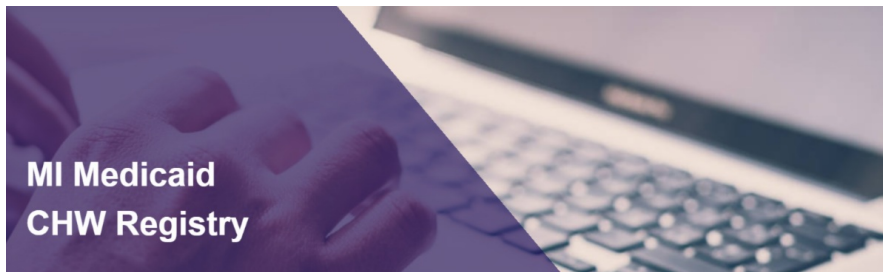
Marlette Regional Hospital proposed a new initiative to connect various senior living facilities in Marlette with medical services and the wider community. The project, titled "Effectively Connecting Seniors," aims to enhance access to these facilities near Marlette Regional Hospital's campus, allowing seniors to safely explore the community and travel more easily for medical appointments.

The initiative intends to address issues of social isolation, mental and physical health, and community connections among senior citizens. It will utilize golf carts for transportation to medical appointments and community events. By improving access to healthcare and health-related activities, this project aims to enhance the overall physical well-being of seniors.

Congratulations, Marlette Regional Hospital!

[Click Here to Read the Full Press Release](#)

Updates to the MI Medicaid Community Health Worker (CHW) Registry: Streamlined Application & Enhanced



MDHHS is excited to announce updates to the MI Medicaid Community Health Worker (CHW) Registry! The registry now offers a more streamlined application process and a user-friendly electronic interface, making it easier for CHW applicants to become approved providers.

The MI Medicaid CHW Registry is a database of Community Health Workers (CHWs) who have met the qualification criteria required to provide CHW services to Medicaid beneficiaries in Michigan. Before registration with the Community Health Automated Medicaid Processing System (CHAMPS) for Michigan Medicaid reimbursement, a CHW must be verified and added to the MI Medicaid CHW Registry.

The Michigan Community Health Worker Alliance (MiCHWA), in partnership with Michigan Primary Care Association (MPCA), is the designated vendor to provide verification and credentialing services, and maintenance of the registry.

[Click Here to Learn More](#)

Enhancing Early Detection and Kidney Care in Rural Michigan - A Collaboration Between MCRH and the National Kidney Foundation of Michigan



The National Kidney Foundation of Michigan (NKFM) and the Michigan Center for Rural Health (MCRH) partnered to equip rural healthcare providers with the tools and education needed to effectively screen for and manage chronic kidney disease (CKD) through the Medicaid Impact and Expansion grant.

The CKD Learning Collaborative focused on improving early detection and management of CKD among Medicaid-eligible populations, providing rural health

clinics (RHCs) with clinical education, technology tools, and support to adopt evidence-based practices for high-risk patients.

The CKD Learning Collaborative brought together four rural health clinics: Cass City Family Practice, Cass City Medical Practice, St. Helen McLaren Primary Care, and Clare McLaren Central. Participating clinics were selected based on Medicaid data indicating high CKD prevalence or low kidney screening rates within their counties, underscoring the program's focus on communities where enhanced CKD care was critically needed.

The "Managing Chronic Kidney Disease (CKD): Resources for Rural Providers" Toolkit offers essential materials for providers and patients, including education, workflows, and screening tools. Developed from collaborative feedback, it supports clinics in implementing effective CKD management practices. Rural health providers across Michigan are invited to enhance CKD care with these resources, enabling early detection, patient-centered management, and a lasting impact on kidney health in their communities.

The MCRH has been proud to work alongside the NKFM to spread the word on early detection and management of CKD and look forward to continuing to share the invaluable resources provided by the NKFM.

[Click Here to View the CKD Toolkit](#)

[Click Here to Read the Full Press Release](#)

Apply for a Michigan Health Endowment Fund Maternal and Infant Health Grant

MICHIGAN HEALTH ENDOWMENT FUND

The Health Fund's 2025 Maternal & Infant Health Initiative is now open! They are seeking proposals for community-driven and locally focused projects that improve health outcomes for pregnant individuals and their infants. The grant range is \$50,000 to \$300,000.

Projects must incorporate at least one of these categories:

- Addressing service delivery environment barriers to improve access to equitable care and services
- Increasing access to protective and clinical interventions that improve screening for health risks and connect people with treatments and services
- Addressing targeted policies, practices, and procedures at the local or practice level that impact or prohibit the best outcomes for mothers and infants

Concept papers, which are highly recommended, are due December 9, 2024. Full proposals are due January 21, 2025.

[Click Here to View the Full Grant RFP](#)

Get Help Implementing AHRQ Resources

for Diagnostic Excellence in the Rural Setting



Agency for Healthcare
Research and Quality

The Agency for Healthcare Research and Quality (AHRQ) recently developed several resources to improve diagnostic safety: [Calibrate Dx](#), [Measure Dx](#), and the [Toolkit for Engaging Patients in Diagnostic Safety](#).

The AHRQ-funded Implementing Diagnostic Excellence Across Systems (IDEAS) project is recruiting healthcare organizations to use and evaluate these resources. Rural health hospitals and clinics are particularly interested in being included and participating in the project.

Participating rural organizations will receive support and training to implement sustainable improvement. Continuing education credits and American Board of Medical Specialties Maintenance of Certification points are available.

[Click Here to Visit the AHRQ IDEAS Website](#)

New Rural Health Value Website and Resources: Rural VBC – The Payer Perspective and TEAM Model Summary



The Rural Health Value (RHV) team is excited to announce a redesigned website and logo. While the look has changed, RHV will continue to provide trusted resources for transitioning rural healthcare organizations, payers, and communities from volume-based to value-based care. Check out their new website for two additional resources:

Rural Value-Based Care—The Payer Perspective, Rural Health Value Summit Report. The Rural Health Value team gathered professionals and executives from national and regional health care payers to discuss insights and challenges in value-based care (VBC) for rural health. Based on the summit discussions, this report highlights key challenges and solutions and provides recommendations for leaders in rural health care organizations.

A one-page summary of CMS's Transforming Episode Accountability Model (TEAM). TEAM is a mandatory, episode-based payment model where selected acute care hospitals coordinate care for Traditional Medicare beneficiaries undergoing specific surgical procedures. These hospitals are responsible for the cost and quality of care from surgery through the first 30 days post-discharge. Of the 741 hospitals participating, 124 (16.7%) are in non-metro counties. In Michigan, [ProMedica Charles and Virginia Hickman Hospital](#) is the only facility currently participating.

[Click Here to View the Payer Perspective Report](#)

[Click Here for the CMS Summary of](#)

MDHHS State and Local Cybersecurity Grant Program FY23 State and Local Cybersecurity Grant Application Now Open



The application period for Fiscal Year (FY) 23 State and Local Cybersecurity Grant Program (SLCGP) funding is now open.

The application can be accessed on the Michigan.gov SLCGP website [FY23 Application For SLCGP Funding](#) or here - [FY23 SLCGP Application](#). If you are interested in submitting for a subgrant award, you are encouraged to review the guidance documentation prior to submitting your actual application.

The Michigan State and Local Cybersecurity Grant Program Advisory Board has developed eight programs to distribute the funds. Applicants are eligible to apply for all programs but are not guaranteed to be funded. Separate applications must be completed for each project area you are requesting funding:

- Endpoint Detection & Response (EDR) Managed Detection & Response (MDR) Extended Detection Response (XDR) or Advanced Endpoint Protection.
- Cybersecurity Assessments.
- Multifactor Authentication (MFA).
- Advanced Backup Solutions.
- Migration to .gov Domain.
- Managed Service Provider (MSP) Costs.
- Cybersecurity Awareness Training.
- Cybersecurity Professional Training for IT/Security Staff.

The deadline to submit an application is December 30 at 11:59 PM.

[Click Here to Learn More](#)

Microgrant Program to Advance Disability Healthcare Equity for Safety Net Organizations



The University of Michigan Center for Disability Health and Wellness (U-M CDHW) has recently announced its initial call for applications from safety net organizations within Michigan interested in enhancing healthcare access and inclusion for individuals with disabilities from low-income and traditionally underserved communities.

- Grants will be awarded in amounts up to \$5,000 to support the one-time purchase of equipment, the development of material or educational programming, or the support of training activities associated with improving the accessibility and quality of healthcare for individuals with disabilities.
- All projects will demonstrate the involvement of local disability representatives and show how the project will have a broad impact on people with disabilities in the identified community.
- The project must be realistic and achievable within a six-month time frame.
- At least 4 grants this year will be awarded.

While new initiatives are welcome, applicants are encouraged to leverage existing projects that could benefit from additional funding to enhance or expand disability access and inclusion.

Projects that are eligible for funding may include but are not limited to the following categories:

- Improving access to healthcare for people with physical, cognitive, sensory, and developmental disabilities.
- Inclusive wayfinding and accessible route planning to healthcare settings at the community level.
- Training for healthcare providers and staff to improve the quality of care available for people with physical, cognitive, sensory, and developmental disabilities.

For the first year of this program, only Michigan nonprofit healthcare safety net organizations that provide direct patient care are eligible to apply for this funding. U-M CDHW, in partnership with Blue Cross Blue Shield (BCBS) of Michigan, supports this grant program.

The deadline for proposals is January 15, 2025.

[Click Here for More Information](#)

**Register Today for the Fall Rural Health
Clinical Congress - November 23**

Fall 2024
Rural Health[™]
CLINICAL CONGRESS



The RME Collaborative invites you to attend the Rural Health Clinical Congress Fall 2024 on Saturday, November 23,

This free, multi-topic, interactive CME/CE conference is designed for clinicians serving patients from rural and underserved areas! The live broadcast starts at 9:00 am ET and offers a unique opportunity to earn FREE CME/CE credits, including pharmacology credits for nurses.

For questions, please contact RME Collaborative at cme@ruralhealthcme.com or 800-913-9370.

[Click Here For More Details and a Link to Register](#)

MBQIP Upcoming Deadlines, Reporting Reminders and Resources



MCRH continues to provide monthly Medicare Beneficiary Quality Improvement Project (MBQIP) updates that will help improve the quality of care provided in Critical Access Hospitals (CAHs).

MBQIP Reporting Updates

MBQIP 2025 Assistance

Not sure where to start with reporting the [new MBQIP 2025 core measures](#)? The Data Submission Guides are a great place to start! These guides are designed to meet hospitals where they are at in their reporting journey, such as:

- Rural relevancy and buy-in
- Measure specifications
- Data collection and hospital implementation
- Data submission
- Understanding outcomes and quality improvement

Upcoming Deadlines and Reporting Reminders

- Hospital Consumer Assessment of Healthcare Providers and Systems (HCAHPS) Q3 2024 encounters (7/1/24- 9/30/24) is due **January 2, 2025**.
- Emergency Department Transfer Communication (EDTC) Q4 2024 encounters (10/1/24- 12/31/24) are due. Contact your **State Flex Program** for submission process details.
- Reporting median time from ED arrival to ED departure(OP-18) Q3 2024 encounters (7/1/24-9/30/24) is due **February 3, 2025**. Submission is through the HQR Secure Portal-Outpatient. **CART version 1.25.0**. For questions on CART submission and requirement details, connect with your State Flex Program.
- Safe Use of Opioids- Concurrent Prescribing Q3 and Q4 encounters (7/1/24-12/31/24) is due **February 28, 2025**. Submission is through the HQR Secure Portal. Note: This measure is not currently being submitted for MBQIP but is available for reporting to CMS.

Critical Access Hospital Quality Inventory and Assessment

Extensive resources (including a [document with all of the questions](#) as well as a [CAH Fact Sheet](#)) for the Assessment can be found [here](#). When you have collected the responses to the Assessment questions, please [go to the portal here to submit your answers](#). If you have any questions, please reach out to your state's Flex Program or the Flex Monitoring Team (lahrx074@umn.edu).

MBQIP Data Submission Deadlines are on the RQITA Resource Center website under Data Reporting linked below.

[Data Reporting | Telligen](#)

For more on MBQIP, please contact Amanda St. Martin, Hospital Programs Manager, at amanda.saintmartin@affiliate.msu.edu.

November Strength of Rural Spotlight Series: The LMAS District Health Department's Snack Program



Each month, the Michigan Center for Rural Health highlights people and organizations who uplift rural health through the Strength of Rural Spotlight Series. In November, MCRH spotlights the LMAS (Luce, Mackinac, Alger, Schoolcraft) District Health Department and its

student snack program.

The LMAS District Health Department's snack program, which provides fresh apples, bananas & oranges to students at Tahquamenon area schools, began as a "No Kid Hungry" grant. The original plan was to provide a food pantry with easy grab and go meals for families or adolescents that could be made at home when food was in short supply or students were looking to cook for themselves because parents were working. Students could take a bag of supplies & a recipe card for a simple 5 ingredients or less meal.

The Counseling And Medical Place also known as "The CAMP" to students and area residents housed the pantry in a corner of the school based health center. They soon realized that students were finding out about the food pantry but were more interested in something they could grab to eat during the school day. The only items leaving the pantry were things they could grab & eat on the way to their next class or bring home in their backpack to eat later.

After surveying the students, results showed they were very interested in having a healthy snack available to them during the day. LMAS wanted to ensure the snack going out was not a pre-packaged and processed food item, that it was truly something nutritious. They also wanted it to be something available to all the students in grades 7-12, who did not have a designated snack time during the day.

Do you have a story to share? Know a rural organization or individual making a difference? Email Laura Mispelon, Social Drivers of Health Manager, at laura.mispelon@affiliate.msu.edu, and let us share your story!

[Click Here to Read the Full LMAS District Health Department Spotlight Article](#)

Upcoming MCRH Educational Events



Grand Rounds:

December 3, 12-1 PM EST

Psychiatry Grand Rounds: Eating Disorder Screening, Assessment, and Management

Speakers: Jessica Van Huysse, PhD & Natalie Prohaska, MD

[Register Here](#)

CE Provided for Social Workers, Nurses, Registered Dietitians, Nutritionists, and Dietetic Technicians

December 6, 12-1 PM EST

Oral Health Grand Rounds: Perinatal Oral Health

Speaker: Laura Garman, MS - Michigan Department of Health and Human Services (MDHHS)

[Register Here](#)

CE Provided for Social Workers, Nurses, Physicians, and Community Health Workers, Dentists, Dental Hygienists, Dental Therapists, and Dental Assistants

December 10, 12-1 PM EST

Social Work Grand Rounds - Behavioral Health Series: Discharge Planning

Speaker: Gennie Groover, LLMSW - Northern Michigan Opioid Response Consortium (NMORC)

[Register Here](#)

CE Provided for Social Workers and counselors working in a SUD or Mental Health Setting: Detox/Inpatient Psych, Residential, Partial Hospitalization, Intensive Outpatient, Outpatient

Project ECHO:

December 11, 12-1 PM EST

Update on Vaccinations for Primary Care Providers

ADDITIONAL NEWS & RESOURCES:

FUNDING:

[AHRQ State-Based Healthcare Extension Cooperatives – Apply by December 12](#)

RURAL EMERGENCY HOSPITALS:

[Updated Guidance for Rural Emergency Hospitals \(REHs\)](#)

CYBERSECURITY:

[AHA Helps Secure New Cybersecurity Resources from Microsoft and Google to Assist Rural Hospitals](#)

[Information on Microsoft Cybersecurity Program for Rural Hospitals // SIGN UP](#)

TELEHEALTH:

[Expanding Dental Care to Children Through Telehealth](#)

[Building Michigan's State Broadband Plan](#)

[VIDEO: How Broadband Access Positively Impacts the Growing American Workforce](#)

[2024 State Policy Agenda for Telehealth Innovation](#)

HOSPITAL PROGRAMS:

[CMS Updates Hospital Policies for Fiscal Year 2025 and Finalizes a New Payment Model for Select Surgeries](#)

PRIMARY CARE:

[Updates to FY25 Medicare Inpatient Hospital Pay Rates – Comment by November 29](#)

[Valuing Community: Framing Childhood Vaccines in Rural America](#)

[Financial Performance of Rural and Urban Hospitals in the Medicare Shared Savings Program](#)

[Request for Comment on New Tools for States to Report Data on Mental Health Parity](#)

[CMS Announces New Lower Drug Prices for 2026 / Negotiated Pricing Fact Sheet](#)

[CMS Innovation in Behavioral Health Model](#)

[New Changes to Behavioral Health Intensive Outpatient Program Coverage in Medicare](#)

[Medicare Advantage Plan Growth in Rural America: Availability of Supplemental Benefits](#)

SOCIAL DRIVERS OF HEALTH:

[HHS Launches New "Food as Medicine" Resources](#)

[A Healthy Mouth for Every Body - A Look At The Connection Between Oral Health and Overall Health](#)

[ERS on Household Food Security in the United States in 2023](#)

[Engaging Policymakers for Healthier Communities | County Health Rankings & Roadmaps](#)

[Healthy People 2030 Webinar Recording: Planning for Individual and Community Health](#)

[The U.S. Playbook to Address Social Determinants of Health](#)

SUBSTANCE USE DISORDER:

[Take 10! Transforming Care for Women with Substance Use Disorders \(SUDs\) and Their Families](#)

[Webinar Series](#)

[Health Affairs Call for Abstracts on Overdose Crisis – December 2](#)

[Opioid Settlement Resource Center - The Michigan Association of Counties \(micounties.org\)](#)

[Opioid Settlement Overview Table](#)

[Recovery-Ready Workplace Toolkit for Businesses](#)

[Model Recovery Ready Workplaces Act](#)

WORKFORCE:

[Statewide Investment Helps Youth Explore Future Careers In Michigan](#)

[Mental Health in the Rural Workplace](#)

[Mobilizing Health Care Workforce via Telehealth](#)

VETERANS:

[National Association of Community Health Centers Veterans Interest Group](#)

[Fraud Alert - Help Stop Medical Billing Fraud for Massage Therapy](#)

[Online Certification Programs Provide Training in Environmental Exposures - VA News](#)

[Calculating VA Disability Ratings - VIDEO](#)

[VIDEO: What CHAMPVA Covers, Costs & Submitting Claims](#)

[Sign Up for the VA Office of Rural Health \(ORH\) Quarterly Newsletter](#)

[VA Benefits that Pass on to Family Members - VIDEO](#)

[Find Your County's Veteran Service Officers](#)

[Updated Veterans Educational Videos from the IREACH Program](#)

[Questions about VA healthcare? Attend the Veterans Healthcare Workgroup Monthly Meeting on the Second Monday of Every Month at 1 PM EST \(Zoom Link\)](#)

ADDITIONAL RESOURCES:

[CMS Creates New Prescription Drug Resource Hub](#)

[Updated Catalog of Value-Based Initiatives for Rural Providers](#)

[New Birthing Friendly Hospital Designation Available on Care Compare Website](#)

[New Map Shows Rural Emergency Hospitals](#)

**A SPECIAL THANK YOU TO MCRH'S
2024 ORGANIZATIONAL SPONSORS**



NATIONAL KIDNEY
FOUNDATION®

of Michigan



Is your organization interested in becoming a 2024 MCRH Organizational Sponsor? Please contact Doug Siwek (siwekdou@msu.edu) for more information on this branding opportunity.

[Click to View More Organizational Sponsor Details](#)

[Click Here for the 2024 MCRH Organizational Sponsor Form](#)

[Visit the MCRH Website](#)

[Click Here to Subscribe to the MCRH Newsletter](#)

Please visit and follow MCRH's social media channels for more news and information:





Try email marketing for free today!