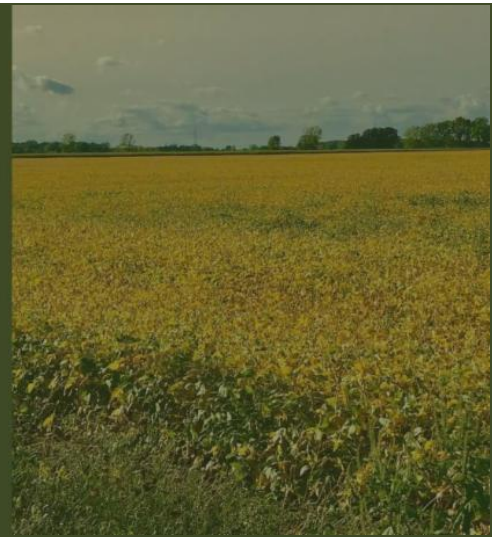




Our Mission:

TO COORDINATE, PLAN, AND ADVOCATE FOR IMPROVED HEALTH FOR MICHIGAN'S RURAL RESIDENTS AND COMMUNITIES.



MCRH MONTHLY NEWSLETTER

September 2024
Volume 5, Issue 9

MCRH Visits Sturgis Hospital: A Spotlight on Michigan's First Rural Emergency Hospital

Sturgis Hospital
Continued HOMETOWN Healthcare Services

EMERGENCY ROOM
OPEN 24/7

CONTINUED OUTPATIENT SERVICES

- CT
- MRI
- Xrays
- Ultrasounds
- EKGs
- ECHO
- Cardiac Rehab
- Sleep Studies
- Infusions
- Nuclear Medicine
- Laboratory
- Physical Therapy
- Stress Tests: Cardiac and Nuclear
- Mammography: Screening & Diagnostic

Outpatient Surgeries:

- Ophthalmology
- Podiatry
- General Surgery
- Endoscopy

To schedule outpatient services call 269.659.6705 or fax orders to 269.659.6787

The Michigan Center for Rural Health recently visited Sturgis Hospital, Michigan's pioneering and only Rural Emergency Hospital (REH). In addition to the visit, MCRH had the privilege of supporting Sturgis Hospital through HRSA grant funding. These funds enabled hospital leadership to purchase a new radio system for internal communications. Sturgis leadership used the remaining funds to facilitate local outreach by running advertisements in Sturgis Hospital's community newspaper.

This visit underscored the significant progress the hospital has made in adapting to its REH status while maintaining its commitment to providing critical healthcare services to the community.

Led by Loren Corbin, Chief Nursing Officer; Bobbi Morin, Chief Financial Officer; and Lindsey Hernandez, Chief Quality Officer, Sturgis Hospital operates with a dedicated team of nearly 200 employees. Although the hospital no longer admits patients, it excels in its emergency department (ED), achieving an impressive average door-to-discharge time of under 106 minutes. The ED handles approximately 720 visits each month, a testament to its efficiency and effectiveness.

In addition to emergency care, Sturgis Hospital offers a broad spectrum of essential services. These include general surgery, ophthalmology, podiatry, endoscopy, infusions, injections, cardiac stress tests, and sleep testing. Each month, the hospital provides about 3,400 outpatient services, including 1,456 radiology procedures and 8,611 lab tests.

Despite the challenges faced by rural healthcare facilities, Sturgis Hospital remains a vital component of the local healthcare system, especially in its emergency services. The absence of pediatric care in the town has increased pediatric ED visits, further

emphasizing the hospital's role in the community. Collaborating closely with local EMS providers, Sturgis Hospital ensures that patients requiring more intensive care are efficiently transferred to surrounding inpatient hospitals. The transition to REH status has had minimal impact on the EMS system of care, ensuring continued reliability in emergency services for the Sturgis community.

As Michigan's first Rural Emergency Hospital, Sturgis Hospital is a model of resilience and adaptability in rural healthcare. It consistently meets the needs of its community with unwavering dedication and expertise.

***NOTE:** The "Additional News and Resources" section toward the bottom of the MCRH Newsletter contains a link to updated guidance for rural emergency hospitals.*

MCRH Hosts National Rural Health Leaders for Tour of Northern Lower Michigan and Upper Peninsula



Recently, MCRH was able to take national rural health leaders **National Rural Health Association**, **Grantmakers In Health**, **National Organization of State Offices of Rural Health (NOSORH)**, **Indian Health Service**, and the **Federal Office of Rural Health Policy**) through the Upper Peninsula and Northern Lower Michigan to hear and see the innovations happening in rural MI.

A few highlights:

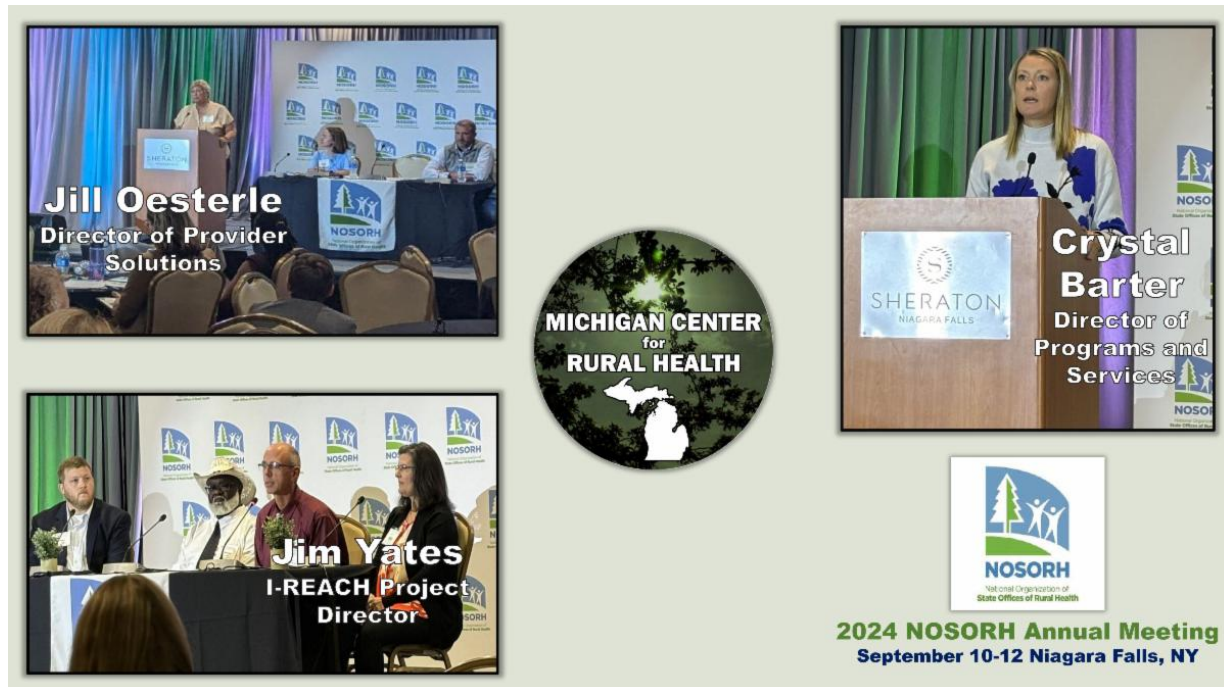
- Learning from the Marquette Family Medicine Residency Program Director and residents and having a candid conversation regarding attracting medical students to Family Practice and Ob-Gyn.
- Hearing from the **LMAS District Health Department** and **Chippewa County Health Department** on how they are expanding resources for rural residents, including their strategic utilization of CHWs.
- Touring the only opioid-treatment program (OTP) in the UP (**Sacred Heart – St. Ignace Location**).
- Touring **McLaren Northern Michigan - Cheboygan Campus**, including their rural inpatient behavioral health unit.
- Learning from **Mackinac Straits Health System** and The Sault Tribe on how their collaboration maximizes resources for the Tribal population. In addition, learning more about the immense nuances related to Island healthcare, including providing care for the over 1.6 million tourists that visit over a six-month period each year.
- Touring **Kalkaska Memorial Health Center** – an independent CAH with an impressive breadth of services that keep care local (and in beautiful facilities!). A great example of a CAH strategy that prioritizes and innovates to meet community needs.
- A great conversation with the **Michigan Health Endowment Fund** regarding their rural priorities and the impact philanthropy is making on rural Michigan. In addition, hearing from a grantee (**Northwest Community Health Innovation**

Region (Northwest CHIR)) making a meaningful impact on behavioral health in Northern Lower Michigan.

- Finally, learning from **Munson Healthcare** leadership about their strategic vision for regionalizing healthcare to ensure sustainability for years to come and their dedication to meeting the care of the unhoused via their rural street medicine program.

Thank you to all of our rural health partners who took the time to share with our Federal Partners!

MCRH Team Members Uplift Michigan Rural Health at NOSORH Annual Meeting



Members of the MCRH team had the opportunity to present at the National Organization of State Offices of Rural Health (NOSORH) Annual Meeting recently in Niagara Falls, NY.

- Director of Provider Solutions, Jill Oesterle, participated in a panel focused on Empowering State Offices of Rural Health: Building a Robust Rural Health Clinic (RHC) Network for Regulatory Compliance, Financial Stability, and Clinical Excellence. She spoke about MCRH's RHC resources and the MI RHC Network.
- I-REACH Project Director, Jim Yates, took part in a panel discussion on increasing access to healthcare for Rural Veterans. Jim shared insight on the I-REACH program, including outreach efforts and its impacts in the Upper Peninsula and Thumb regions of MI.
- Director of Programs & Services, Crystal Barter, shared MCRH programming related to expanding Palliative Care in Rural MI, including the formation of MCRH's Rural Palliative Care Advisory Council. In addition, she participated in a panel showcasing MCRH's support of leadership development for rural MI healthcare professionals.

We are proud to have MCRH voices sharing their expertise and advocating for the improvement of rural health in Michigan on a national stage.

MCRH Celebrates Recipients of the 2024 Governor's Award of Excellence



Two Michigan hospital representatives (Left) Jen Anderson, CPHQ, Community Hospital Lead PI Specialist University of Michigan Sparrow (Right) Heather Schragg, CIC, II, Director Quality, Risk Management, Medical Staff Eaton Rapids Medical Center receiving the 2024 Governor's Award of Excellence at this year's ceremony.

MCRH is pleased to announce that several Critical Access and Rural Hospitals have been honored with the prestigious 2024 Governor's Award of Excellence. This award, a significant recognition in Michigan's healthcare community, highlights outstanding efforts in various areas crucial to improving health outcomes across the state.

The 2024 Governor's Award of Excellence is a distinguished honor offered through a collaborative initiative involving Governor Gretchen Whitmer, iMPROve Health, and the Michigan Health & Hospital Association (MHA) Keystone Center. This award celebrates healthcare providers who have demonstrated exceptional commitment to advancing healthcare quality and safety, with a special focus on areas critical to the well-being of Michigan residents.

The award criteria are closely aligned with the healthcare objectives set forth by the Centers for Medicare & Medicaid Services (CMS). Participating organizations had the opportunity to earn recognition in up to three different categories, with the possibility of receiving Medals of Achievement for incorporating Person and Family strategies and/or Health Equity strategies into their improvement efforts. Many hospitals received the award around Emergency Department Transfer Communication, a metric associated with the Medicare Beneficiary Quality Improvement Program, which MCRH administers for the State of Michigan.

This year's recipients include:

-Aspire Rural Health System-Deckerville Community Hospital:
All-Cause 30-Day Readmissions: Critical Access Hospitals
Emergency Department Transfer Communication: Critical Access Hospitals

-Aspire Rural Health System-Hills and Dales Healthcare:
Emergency Department Transfer Communication: Critical Access Hospitals

-Aspire Rural Health System-Marlette Regional Hospital:
Emergency Department Transfer Communication: Critical Access Hospitals

-Aspirus Iron River Hospital & Clinics:
All-Cause 30-Day Readmissions: Critical Access Hospitals
Clostridioides Difficile Infection Rates: Critical Access Hospitals

-Aspirus Ironwood Hospital:

*High-Dose Opioid Prescribing Adverse Drug Events Upon Discharge:
Critical Access Hospitals
Sepsis Mortality: Critical Access Hospitals*

-Aspirus Keweenaw Hospital:
Sepsis Mortality: Critical Access Hospitals

-Bronson LakeView Hospital:
*High-Dose Opioid Prescribing Adverse Drug Events Upon Discharge:
Critical Access Hospitals*

-Eaton Rapids Medical Center:
Emergency Department Transfer Communication: Critical Access Hospitals

-Harbor Beach Community Hospital:
All-Cause 30-Day Readmissions: Critical Access Hospitals

-Helen Newberry Joy Hospital:
Emergency Department Transfer Communication: Critical Access Hospitals

-McKenzie Health System:
Emergency Department Transfer Communication: Critical Access Hospitals

-McLaren Thumb Region:
*Anti-Coagulation-Related Adverse Drug Events:
Critical Access Hospitals*

-Munson Healthcare Charlevoix Hospital:
*High-Dose Opioid Prescribing Adverse Drug Events Upon Discharge:
Critical Access Hospitals*

-MyMichigan Health Gladwin:
All-Cause 30-Day Readmissions: Hospitals

-Schoolcraft Memorial Hospital:
*Emergency Department Transfer Communication: Critical Access Hospitals
Pneumococcal Vaccination Rates: Critical Access Hospitals*

-University of Michigan Health-Sparrow Clinton:
All-Cause 30-Day Readmissions: Critical Access Hospitals
Health Equity Medal of Achievement
*Clostridioides Difficile Infection Rates: Critical Access Hospitals
Emergency Department Transfer Communication: Critical Access Hospitals*

-University of Michigan Health-Sparrow Eaton:
Emergency Department Transfer Communication: Critical Access Hospitals

-University of Michigan Health-Sparrow Ionia:
Emergency Department Transfer Communication: Critical Access Hospitals

-Hillsdale Hospital:
Clostridioides Difficile Infection Rates: Hospitals

-Munson Healthcare Grayling Hospital:
*Anti-Coagulation-Related Adverse Drug Events: Hospitals
Opioid-Related Adverse Drug Events: Hospitals*

-MyMichigan Health Alpena:
*High-Dose Opioid Prescribing Adverse Drug Events Upon Discharge:
Hospitals*

-MyMichigan Medical Center Sault:
All-Cause 30-Day Readmissions: Hospitals
Health Equity Medal of Achievement

-University of Michigan Health-Sparrow Carson:
Influenza Vaccination Rates: Hospitals

MCRH congratulates everyone on this well-deserved recognition and thanks them for all they do to keep their communities safe and healthy.

Michigan Health Endowment Fund Awards \$14 Million+ In New Grants to Enhance Behavioral Health, Food Access, and Built Environments

MICHIGAN HEALTH ENDOWMENT FUND

The Health Fund recently **announced** 60 new grants totaling over \$14.7 million to improve health in Michigan. These funds will fuel new projects through our Behavioral Health and Nutrition & Healthy Lifestyles initiatives. Together, these investments seek to build effective systems of care and support better conditions for health and well-being in communities throughout the state.

Their 2024 **Behavioral Health Initiative** is investing \$7,358,087 in 28 innovative projects that support training and outreach, enhance systems for delivering behavioral health services, expand access to treatment for substance use disorders, and promote health equity for populations of concern.

Their 2024 **Nutrition & Healthy Lifestyles (NHL) Initiative** is awarding 28 grants totaling \$7,059,412 to projects that expand access to nutritious food, support healthy food systems, promote physical activity, and improve built environments to help communities enhance the health of their residents.

The Health Fund board has also approved three grants totaling \$249,525 as off-cycle investments through the **Community Health** and **Capacity Building** initiatives and one grant totaling \$97,971 to support a medically tailored meals program for older adults with diabetes through its **Healthy Aging Initiative**.

[**Click Here to View Rural Michigan Organizations Awarded
Funding in Each Category**](#)

MSU Extension's Physician Peer Education Project on Immunization (PPEPI) Offers Free CMEs

MICHIGAN STATE
UNIVERSITY

Extension

Since 1995, Michigan State University (MSU) Extension's Physician Peer Education Project on Immunization (PPEPI), in partnership with MDHHS, has offered free continuing medical education units (CMEs) to healthcare providers. PPEPI's

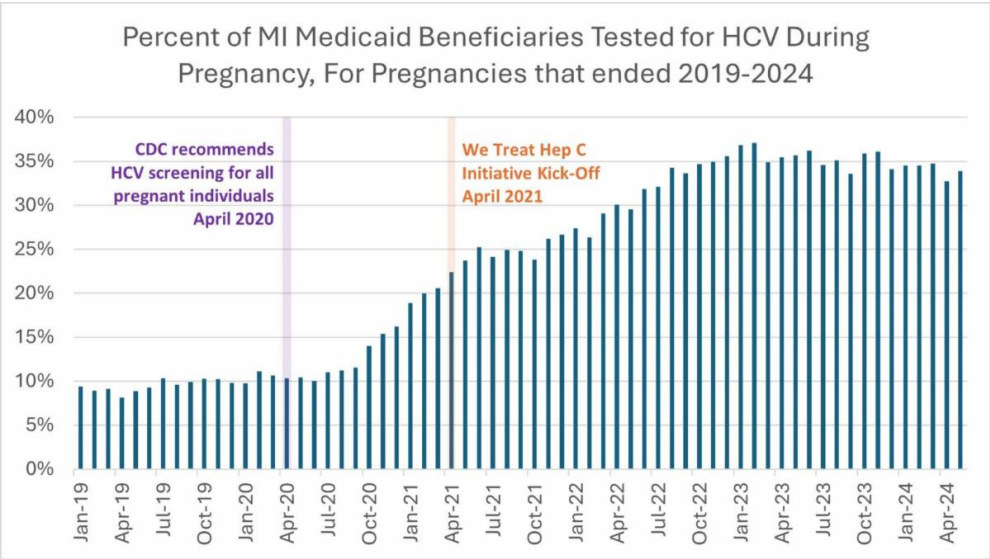
statewide network of physicians provides free immunization classes to practicing physicians and their staff at Grand Rounds, conferences, and medical staff meetings. Zoom and in-person lectures are available on several topics:

- Adult immunizations (19+ years)
- Family practice immunizations (lifespan)
- Health care personnel recommendations
- Influenza immunizations
- OBGYN immunizations
- Pediatric immunizations (birth - 18 years)
- HPV immunizations
- Building confidence with vaccine-hesitant patients

These peer-to-peer sessions offer an opportunity to learn current, accurate immunization information. MDHHS approves session content, and CMEs are processed through MSU's College of Medicine.

[Click Here to Visit the PPEI Website to Learn More](#)

Medicaid Beneficiaries Tested for Hepatitis C During Pregnancy



Michigan Medicaid claims data shows hepatitis C testing among pregnant Medicaid beneficiaries rose substantially, from under 10% before 2020 to about 35% in the past one-year period.

The Centers for Disease Control and Prevention (CDC), the American College of Obstetricians and Gynecologists (ACOG), and the Michigan Department of Health and Human Services (MDHHS) **recommend screening all pregnant persons for hepatitis C during each pregnancy.**

Despite this progress, MDHHS continues to emphasize the importance of testing pregnant patients for hepatitis C for early identification, timely medical intervention, and management of potential complications for both parent and child.

[Click Here for More Information in the MDHHS We Treat Hep C Clinician Newsletter](#)

Register Today for the MDHHS Fall Immunization Conference - November 7

SAVE THE DATE!



2024 Virtual ONLY Fall Immunization Conference

Nov. 7, 2024 | 8:30 a.m. to 3:30 p.m.



Learn about current vaccine recommendations.



Michigan immunization updates.



Hear from immunization experts and champions.

This event is for physicians, physician assistants, nurses, nurse practitioners, medical assistants, public health staff, pharmacists, medical and nursing students, practice managers, and other health care professionals who are interested in learning more about current immunization practices in Michigan.
Continuing education credits pending.



Registration opens **Sept. 9, 2024.**
<https://events.anr.msu.edu/Fallconference2024/>

The MDHHS Fall Immunization Conference has been offered annually for more than 20 years and has consistently received high ratings from attendees. The primary goal is to update health care providers on immunization issues that affect people of all ages – from the very young to the very old.

The goal is to provide participants with various practice-management tools, techniques, and information that will help them ensure that all their patients are fully immunized.

This conference is appropriate for physicians, nurses, nurse practitioners, medical assistants, public health staff, pharmacists, physicians, physician assistants, medical and nursing students, and anyone interested in learning more about current immunization practices in Michigan.

The registration fee for conference attendees is \$50 per person. **Registration will close at 5 p.m. on November 4th.**

[Click Here to Learn More](#)

MBQIP Upcoming Deadlines, Reporting Reminders and Resources



MCRH is excited to introduce monthly Medicare Beneficiary Quality Improvement Project (MBQIP) updates that will help improve the quality of care provided in Critical Access Hospitals (CAHs).

MBQIP Reporting Updates

-Reporting Hybrid HWR for Q3 2023-Q2 2024 encounters (7/1/2023-6/30/2024) is due **October 1** for reporting to CMS. Note: The measure is not currently being submitted for MBQIP but is available for reporting to CMS.

-Reporting Hospital Consumer Assessment of Healthcare Providers and Systems (HCAHPS) Q2 2024 encounters (4/1/24-6/30/24) is due **October 2**. Submission is through the HQR Secure Portal-Vendor.

-Emergency Department Transfer Communication (EDTC) Q3 2024 encounters (7/1/24- 9/30/24) is due **October 31**. Connect with your **State Flex Program** for details on the submission process.

-Reporting Median time from ED arrival to ED departure(OP-18) Q2 2024 encounters (4/1/24-6/30/24) is due **November 1**. Submission is through the HQR Secure Portal-Outpatient. CART users will use CART version 1.24.0. If you have questions about CART submission and requirement details, please contact your State Flex Program.

MBQIP Overview Resources

MBQIP Core Set Information Guide Version 2.1 Released April 2024
This guide provides an overview of measures included in the MBQIP 2025 Measure Core set. This includes information about the data collection, reporting processes, and descriptions for each measure.

MBQIP 2025 Data Submission Deadlines Version 1.1 Released April 2024.
This resource includes details of the implementation timeline for the MBQIP 2025 Core Measure Set and data submission deadlines.

Hybrid Hospital-Wide Readmissions Resources

Data Submission Guide for Hybrid Hospital-Wide Readmissions Version 1.0 Released July 2024. This guide includes tips for hospitals to start reporting new measures, measure details, linked trainings, and step-by-step data submission steps for the Hospital Commitment to Health Equity measure.

For more on MBQIP, please contact Amanda St. Martin, Hospital Programs Manager, at amanda.saintmartin@affiliate.msu.edu.

**Limited Partnerships Still Available for
the 2024 Michigan Critical Access**

Hospital Conference



2024 Michigan Critical Access Hospital Conference

November 7-8, 2024, Park Place – Traverse City, MI

Why Exhibit: The Michigan Critical Access Hospital Conference provides the single most targeted opportunity to reach C-level executives with your organization's message, products, services, and educational outreach efforts. MCRH invites three guests (CEO, CFO, CNO, and Quality Manager) from each of the 35 CAHs to discuss relevant issues, network, and disseminate information.

EXHIBITOR PACKAGES

Includes the Bronze Package PLUS:

GOLD
\$2250

- Recognition as **GOLD** Sponsor
- **2 Additional** Complimentary Registrations
- Recognition as a **BREAKFAST SPONSOR**
- **One** Pre-Recorded Video (up to 2 minutes) that will be included in the Safe Travels Email before the event

SILVER
\$1750

Includes the Bronze Package PLUS:

- Recognition as **SILVER** Sponsor
- **1 Additional** Complimentary Registration
- Recognition as **SNACK/BREAK SPONSOR**

BRONZE
\$1350

- Recognition as **BRONZE** Sponsor
- **1** Complimentary Registration
- Participant List before the event
- **1** Exhibit Table
- Meals Included



Charging Station - \$750

(1 Sponsorship Available)

Your logo will be displayed prominently by each charging station for maximum visibility!

Official Conference App - \$650

(Limited Sponsorships Available)

Keep your brand in front of this year's attendees as they share photos, engage in live chat, and keep up to date on the agenda through the app!



Entertainment Sponsor - \$500

(Limited Sponsorships Available)

Have your logo placed prominently near the musicians, logo recognition on CAH slides, and have your organization officially announced during the reception.

Join the Michigan Center for Rural Health as an event partner at this year's Critical Access Hospital (CAH) Conference, November 7-8, at Park Place in Traverse City, Michigan.

Why Exhibit: The Michigan Critical Access Hospital Conference provides the single most targeted opportunity to reach C-level executives with your organization's message, products, services, and educational outreach efforts. MCRH invites three guests (CEO, CFO, CNO, and Quality Manager) from each CAH to discuss relevant issues, network, and disseminate information.

[Click Here for Partnership Registration](#)

September's Strength of Rural Spotlight: Northern Michigan University Center for Rural Health

CENTER FOR RURAL HEALTH



NORTHERN MICHIGAN UNIVERSITY

Each month, the Michigan Center for Rural Health highlights people and organizations who uplift rural health through the Strength of Rural Spotlight Series. In September, MCRH highlights our partners at the Northern Michigan University Center for Rural Health and its efforts to expand the Community Health Worker workforce through the U.P. WIN grant and training programs.

Established in July 2020, the Northern Michigan University Center for Rural Health was created to strengthen the rural healthcare system throughout Michigan's Upper Peninsula.

The efforts involve developing a network of committed partners to create efficiencies in healthcare delivery, expand access to healthcare, improve care coordination, and enhance the quality of healthcare services. The Center aims to improve outcomes, reduce costs, ensure access to care, and promote innovative approaches in the region.

In 2023, the Michigan Center for Rural Health received over \$1.4 million in funding to establish the Upper Peninsula Workforce Innovation Network (U.P. WIN). The goal is to expand the Community Health Worker (CHW) and Community Paramedicine (CP) workforce in Michigan's Upper Peninsula region.

The NMU Center for Rural Health has taken the lead in educating, training, supporting, and placing CHWs. It is recognized as the regional training Center for CHWs in the Upper Peninsula of Michigan. In the past year, it has trained more than 60 CHWs by providing the nationally recognized core competency-based CHW Certificate training curriculum on behalf of Everyday Life Consulting.

Lastly, they've established an annual **U.P. CHW Symposium** which is scheduled to take place on October 16th. U.P. CHWs who have engaged in the quarterly network calls have provided insight into what they want to see addressed at this year's symposium.

The NMU Center for Rural Health's work doesn't end with just CHW education, training, and certification but continues through ongoing education, networking, placement, and advancing the CHW profession overall.

Please contact MCRH Social Drivers of Health Manager, Laura Mispelon (laura.mispelon@affiliate.msu.edu), if you are interested in having your organization featured in an upcoming Strength of Rural Spotlight.

[Click Here to Read More about the Northern Michigan University Center for Rural Health](#)

CDC Releases Rural Public Health Strategic Plan for FY 2024 - 2029



In 2023, the CDC established the Office of Rural Health (ORH) to advance rural public health and lead the development of the CDC's Rural Public Health Strategic Plan.

The office is in CDC's National Center for State, Tribal, Local, and Territorial Public Health Infrastructure and Workforce ("Public Health Infrastructure Center"). This

document summarizes the agency's rural public health strategy. It includes background on its rural public health efforts, the structure and role of ORH, the approach taken to develop the rural strategic plan, and the elements of the strategic plan.

The rural strategic plan defines actionable steps that the CDC can take to collaborate across the agency and with external and federal partners to improve and advance rural public health.

[Click Here to Download the CDC Rural Public Health Strategic Plan](#)

Targeted Technical Assistance for Rural Hospitals Program – Apply by September 30

Targeted Technical Assistance Program *Apply by September 30, 2024*



Applications are being accepted to receive two years of technical assistance through this FORHP-supported program for rural hospitals facing financial and operational challenges that affect their viability.

The Center for Public Health Practice and Research at the Jiann-Ping Hsu College of Public Health, Georgia Southern University, will provide technical assistance for this project, which will begin in November 2024.

[Click Here to Apply](#)

Catch Up On More Rural Health News Every Month With These Two Newsletters

Rural Health Clinic Monthly Bulletin

The latest news and information geared toward Rural Health Clinics (RHCs) in



Michigan.

[Click Here to Read The Latest Issue](#)

NMORC Newsletter

Updates and reminders regarding NMORC efforts to support and promote Substance and Opioid Use Disorder events, resources, and information.



[Click Here to Read the Latest Issue](#)

Upcoming MCRH Educational Events



Grand Rounds:

October 8, 2024, 12-1 PM EST

Social Work Behavioral Health Series Grand Rounds: Crisis Intervention in Behavioral Healthcare

Speaker: Gennie Groover, LLMSW

[Register Here](#)

CE Provided for Social Workers and Counselors working in an SUD or Mental Health Setting: Detox/Inpatient Psych, Residential, Partial Hospitalization, Intensive Outpatient, Outpatient

Project ECHO:

September 24, 12-1 PM EST

One Health ECHO: Leveraging Human, Animal, and Environmental Health Partners to Keep Michigan Healthy Series #3

Speaker: Jennifer Head, PhD, MPH

[Register Here](#)

CE Provided

October 16, 12-1 PM EST

Update on Influenza and RSV for Primary Care Providers

Speaker: Dr. Peter Gulick

[Register Here](#)

CE Provided

EMS:

October 9, 2024, 6-7 PM EST

Getting Paid for MIH and CIP Programs

Speaker: Maggie Adams, EMS Financial Services

[Register Here](#)

CE Provided

ADDITIONAL NEWS & RESOURCES:

FUNDING:

[HRSA Ending the HIV Epidemic in the U.S. – Ryan White HIV/AIDS Program Parts A and B – October 2](#)

RURAL EMERGENCY HOSPITALS:

[Updated Guidance for Rural Emergency Hospitals \(REHs\)](#)

CYBERSECURITY:

[AHA Helps Secure New Cybersecurity Resources from Microsoft and Google to Assist Rural Hospitals](#)

[Information on Microsoft Cybersecurity Program for Rural Hospitals // SIGN UP](#)

TELEHEALTH:

[Expanding Dental Care to Children Through Telehealth](#)

[Building Michigan’s State Broadband Plan](#)

[VIDEO: How Broadband Access Positively Impacts the Growing American Workforce](#)

[2024 State Policy Agenda for Telehealth Innovation](#)

HOSPITAL PROGRAMS:

[Annual Time Burden on CAHs for New Medicare Data Collection – Comment by October 7](#)

[Comments Requested on Information Collection for Hospital and CAH CoPs – Comment by October 7](#)

[CMS Updates Hospital Policies for Fiscal Year 2025 and Finalizes a New Payment Model for Select Surgeries](#)

[AHRQ TeamSTEPPS®: No Cost Training for Patient Safety – Sessions through November 2024](#)

[Comments Requested on Information Collection for Hospital and CAH CoPs – October 7](#)

PRIMARY CARE:

[HRSA Primary Care Residency Fair for Medical and Dental Students – Wednesday, September 25 at 6:00 pm EST](#)

[Patient-Centered Outcomes Research Institute \(PCORI\) Funding: Broad Pragmatic Studies – Letters of Intent October 1](#)

[Financial Performance of Rural and Urban Hospitals in the Medicare Shared Savings Program](#)

[Request for Comment on New Tools for States to Report Data on Mental Health Parity](#)

[CMS Issues Request for Information \(RFI\) for Updates to Medicare Administrative Contractor Jurisdictions – Comment by October 4](#)

[CMS Announces New Lower Drug Prices for 2026 / Negotiated Pricing Fact Sheet](#)

[CMS Innovation in Behavioral Health Model](#)

[New Changes to Behavioral Health Intensive Outpatient Program Coverage in Medicare](#)

[Medicare Advantage Plan Growth in Rural America: Availability of Supplemental Benefits](#)

SOCIAL DRIVERS OF HEALTH:

[A Healthy Mouth for Every Body - A Look At The Connection Between Oral Health and Overall Health](#)

[ERS on Household Food Security in the United States in 2023](#)

[Engaging Policymakers for Healthier Communities | County Health Rankings & Roadmaps](#)

[Healthy People 2030 Webinar Recording: Planning for Individual and Community Health](#)

[The U.S. Playbook to Address Social Determinants of Health](#)

SUBSTANCE USE DISORDER:

[Opioid Settlement Resource Center - The Michigan Association of Counties \(micounties.org\)](#)

[Opioid Settlement Overview Table](#)

[Recovery-Ready Workplace Toolkit for Businesses](#)

[Model Recovery Ready Workplaces Act](#)

WORKFORCE:

[HRSA National Health Service Corps Students to Service Loan Repayment Program –November 7](#)

[Robert Wood Johnson Foundation Health Policy Fellows – November 3](#)

[Statewide Investment Helps Youth Explore Future Careers In Michigan](#)

[Mental Health in the Rural Workplace](#)

[Mobilizing Health Care Workforce via Telehealth](#)

VETERANS:

[HUD-VASH Policies Expand Veterans' Housing Access](#)

[Tele-Urgent Care & Tele-Emergency Care is Now Available](#)

[Expanded Benefits Access For Those Who Served at Uzbekistan's Karshi-Khanabad \(K2\) Base](#)

[Avoid Falling Victim to Claims Predators](#)

[Calculating VA Disability Ratings - VIDEO](#)

[VIDEO: What CHAMPVA Covers, Costs & Submitting Claims](#)

[Sign Up for the VA Office of Rural Health \(ORH\) Quarterly Newsletter](#)

[VA Benefits that Pass on to Family Members - VIDEO](#)

[Find Your County's Veteran Service Officers](#)

[Updated Veterans Educational Videos from the IREACH Program](#)

[Questions about VA healthcare? Attend the Veterans Healthcare Workgroup Monthly Meeting on the Second Monday of Every Month at 1 PM EST \(Zoom Link\)](#)

ADDITIONAL RESOURCES:

[Elevating Rural Disability Data for Policy Impact – Tuesday, September 24 at 2:30 pm EST](#)

[HRSA Ending the HIV Epidemic in the U.S. – Ryan White HIV/AIDS Program Parts A and B – October 2](#)

[Information for Rural Stakeholders About Access to Maternity and Obstetric Care: A Community-Relevant Synthesis of Research](#)

[2024 Physician Fee Schedule Webinar Recording](#)

[CMS Creates New Prescription Drug Resource Hub](#)

[Updated Catalog of Value-Based Initiatives for Rural Providers](#)

[New Birthing Friendly Hospital Designation Available on Care Compare Website](#)

[New Map Shows Rural Emergency Hospitals](#)

**A SPECIAL THANK YOU TO MCRH'S
2024 ORGANIZATIONAL SPONSORS**



NATIONAL KIDNEY
FOUNDATION®

of Michigan



Is your organization interested in becoming a 2024 MCRH Organizational Sponsor? Please contact Doug Siwek (siwekdou@msu.edu) for more information on this branding opportunity.

[Click to View More Organizational Sponsor Details](#)

[Click Here for the 2024 MCRH Organizational Sponsor Form](#)

[Visit the MCRH Website](#)

[Click Here to Subscribe to the MCRH Newsletter](#)

Please visit and follow MCRH's social media channels for more news and information:



Michigan Center For Rural Health | 909 Wilson Road B-218 W Fee Hall Michigan State University |
East Lansing, MI 48824 US

[Unsubscribe](#) | [Constant Contact Data Notice](#)



Try email marketing for free today!