



Monthly Bulletin

Volume 6, Issue 8:
August 2024



A Few Words From Jill:

As summer draws to a close, I would like to share some exciting news!

MCRH, in collaboration with our friends at Magnet Solutions, is offering Point of Service Collections Training this fall.

These trainings will take place in three locations across Michigan: Gaylord (September 10), Caro (September 11), and Escanaba (October 2). They will feature morning and afternoon session options

to conveniently serve your needs.

These two-hour sessions cover industry perspectives, current challenges, organizational and patient benefits, practical skills, and Q&A. Attendees will leave with confidence and practical scripting to communicate financial expectations to patients effectively.

This is a terrific opportunity to invest in your support staff's professional development. Attendance is \$50 per person.

For more information about the Point of Service Collections Training sessions, please click [here](#). You can also contact MCRH Rural Health Projects Assistant Aleah Huse at husealea@msu.edu if you need further assistance registering your team.

As always, please feel free to contact me if you have any questions or need any guidance (oester35@msu.edu).

Thanks,
Jill

**Free Rural Healthcare Providers
Training: Lupus Educational Webinar on
August 23**

Join us

For the Rural Health Outreach Project

The 2024 ACR Rural Health Outreach Project aims to increase exposure of rural healthcare providers to Lupus by collaborating with AHECs to conduct virtual or in-person lupus educational and networking events with an ACR member rheumatologist. There is no cost to attend.



With Guest Speaker
Andrew Vreede, MD
Clinical Assistant Professor
University of Michigan
Rheumatology

DISCLOSURE: The planner(s) and speaker(s) for this session have no relevant financial relationships with ineligible companies to disclose.

ACCREDITATION: This activity has been planned and implemented in accordance with the accreditation requirements and policies of the Accreditation Council for Continuing Medical Education (ACCME) through the joint providership of Central Michigan University College of Medicine and the Michigan Public Health Association. CMU College of Medicine is accredited by the ACCME to provide continuing medical education for physicians. Central Michigan University College of Medicine designates this live activity for a maximum of 1.5 *AMA PRA Category 1 Credit*[™]. Physicians should claim only the credit commensurate with the extent of their participation in the activity.

Intended Audience: Rural Providers including MDs, DOs, PAs, and NPs only



August 23, 2024

12PM - 1:30 PM

Virtual through Zoom

To Register, scan the QR code or click [HERE](#)



This project is supported by the Centers for Disease Control and Prevention of the U.S. Department of Health and Human Services (HHS) as part of a financial assistance award totaling \$7.5 million over 5 years with 100 percent funded by CDC/HHS. The contents are those of the author(s) and do not necessarily represent the official views of, nor an endorsement, by CDC/HHS, or the U.S. Government.

Please register for a lupus education webinar on Friday, August 23rd, from 12:00 to 1:30 PM EST, presented in collaboration with the Mid Central AHEC. Dr. Andrew Vreede, MD, Clinical Assistant Professor at the University of Michigan's Rheumatology Department, will lead the webinar and answer related questions.

There is no cost to attend, and the intended audience members are rural MD & DO physicians, physician associates (assistants), and nurse practitioners.

If you cannot attend, you can complete the recording viewing and survey by September 6th for the 1.5 CME credits.

Register online by clicking the button below before August 22

[Click Here to Register](#)

MDHHS Seeks Applicants for Michigan Racial Health Equity Think Tank



The Michigan Department of Health and Human Services (MDHHS) is seeking applications from Michigan residents interested in participating in the Michigan Racial Health Equity Think Tank (MiRHETT).

MiRHETT's Social Determinants of Health (SDOH) strategy aims to support the social care needs of marginalized and racially diverse Michigan residents by bringing together community and public health leaders for virtual workshops to improve health equity. Eligible participants include community foundation members, MDHHS leadership, community leaders, health specialists, and epidemiologists with expertise in racial and health equity. People in philanthropy, health care, public health, social sciences, policy, and community advocacy are encouraged to apply.

Applications to participate in the MiRHETT must be submitted by 11:59 p.m. on August 23. The program is expected to begin in September and continue through January 2025 with an estimated total commitment of 30 hours.

[Click Here For More Information and Application Details](#)

Michigan Families Urged to Catch Up On Routine Vaccinations For National Immunization Awareness Month



**National Immunization
Awareness Month**

Vaccines are critical to help keep the public healthy, and the Michigan Department of Health and Human Services (MDHHS) urges Michigan residents and families to get caught up and stay up-to-date on vaccines as part of National Immunization Awareness Month (NIAM). This annual observance highlights

efforts to protect individuals of all ages against vaccine-preventable diseases and ensure residents receive vaccinations on time.

According to data from the [Michigan Care Improvement Registry \(MCIR\)](#), as of March 2024, only 66.9% of Michigan children 19 through 35 months of age were fully immunized with recommended vaccines. This is a significant decrease from March 2019 when 73.5% of children in this age group were vaccinated.

MDHHS encourages residents to explore the Centers for Disease Control and Prevention's (CDC) [Interactive Vaccine Guide](#), which offers details on vaccines for children, adolescents, adults and pregnant persons.

[Click Here to Visit the CDC's NIAM Website For More Information](#)

National Kidney Foundation of Michigan Offers Kidney Friendly Summer Recipes



NATIONAL KIDNEY
FOUNDATION®

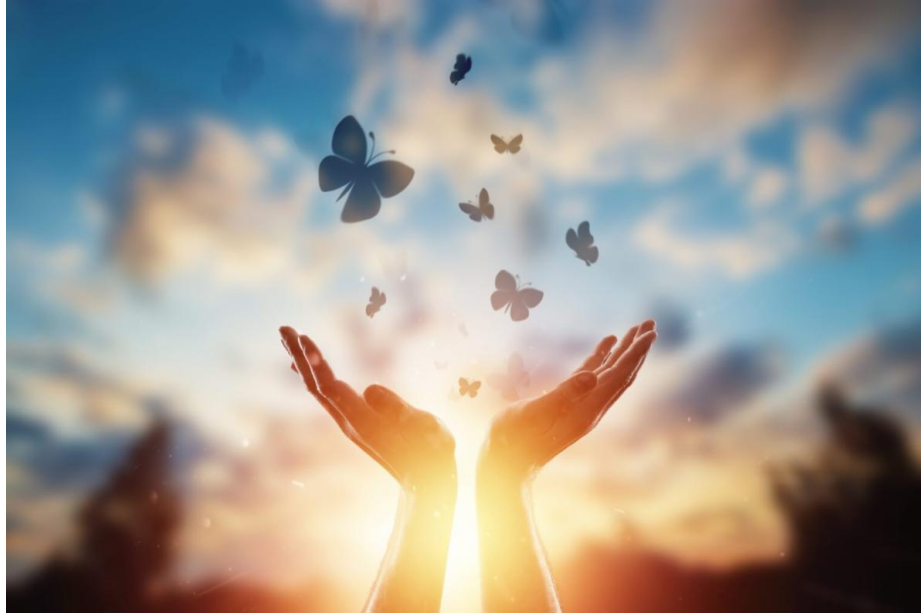
of Michigan

Summer brings lots of fresh fruits and veggies like strawberries, watermelon, berries, corn, cucumbers, green beans, and summer squash. These are all great low-potassium choices for a healthy kidney diet when eaten in moderation. Be careful with high-potassium fruits like cantaloupe, honeydew, nectarines, and home-grown tomatoes. These should be eaten in small amounts if you're on a low-potassium diet.

The National Kidney Foundation of Michigan is also excited to introduce you to some foods and recipes that may be new to you. They are eager to share different ways to prepare some of your old favorites so you can make kidney-healthy food choices for your family and yourself.

[Click Here to Learn About Summer Recipes](#)

MDHHS and Michigan 211 Launch On-Demand Grief and Bereavement Support Services and Resources



The Michigan Department of Health and Human Services (MDHHS), in partnership with Michigan 211, has launched a new website dedicated to increasing access to grief and bereavement support services and resources.

The website was made possible by a \$490,000 grant from the Michigan Health Endowment Fund to the MDHHS Division of Maternal and Infant Health.

Individuals will be able to search for resources and services before and immediately after a death, such as perinatal hospice, palliative care, burial and cremation services, financial assistance, mental health support, resources and services for maternal and infant loss, and resources and services for sudden loss. Users will be able to search for services by ZIP code.

[Click Here to Learn More](#)

New Resources for Young Adults with Breast Cancer



A partnership between the Michigan Department of Health and Human Services (MDHHS) Program for Breast Cancer in Young Adults (PBCYA) and 211 has led to a new online resource page available through Michigan 211. The page aims to increase accessibility and awareness of resources available for younger adults affected by breast cancer.

For those under the age of 45, cancer brings unique challenges that may not be faced by older patients. Feelings of isolation, education or career interruptions, and relationship challenges related to dating, marriage, or children are common. A cancer diagnosis for young adults is life-altering, but support services are available through the PBCYA.

PBCYA is a project funded by the Centers for Disease Control and Prevention (CDC) in the MDHHS Cancer Prevention and Control Section.

[Click Here to Learn More](#)

New Resource: Understanding the Rise of Ransomware Attacks on Rural Hospitals



Hospitals face a growing threat from ransomware attacks that are designed to disrupt care delivery and may consequently threaten patient outcomes and hospital finances. While this overall phenomenon has received media and research attention, little is known about ransomware attacks on hospitals in rural areas.

This policy brief, recently published by the University of Minnesota Rural Health Research Center, presents findings from a novel database of hospital ransomware attacks. It focuses on the frequency and characteristics of ransomware attacks on rural hospitals.

Among the key findings in this brief from the University of Minnesota Rural Health Research Center:

- Rural hospitals experienced an increasing number of ransomware attacks from 2016 to 2021.
- From 2016 to 2021, 43 rural hospitals across 22 states experienced a ransomware attack.
- Ransomware attacks afflicted all types of rural hospitals, including Critical Access Hospitals (N=9), Sole Community Hospitals (N=13), Rural Referral Centers (N=3), and hospitals paid under Medicare's Inpatient Prospective Payment System (N=18).
- Eighty-four percent of ransomware attacks on rural hospitals resulted in operational disruptions. Common disruptions included electronic system downtime (81%), delays or cancellations in scheduled care (42%), and ambulance diversion (33%). Operational disruptions were similar in rural and urban hospital settings.

Click Here to Download the Understanding Ransomware Attacks on Rural Hospitals Policy Brief

2024 Critical Access Hospital Conference Partnerships Available



2024 Michigan Critical Access Hospital Conference

November 7-8, 2024, Park Place – Traverse City, MI

Why Exhibit: The Michigan Critical Access Hospital Conference provides the single most targeted opportunity to reach C-level executives with your organization's message, products, services, and educational outreach efforts. MCRH invites three guests (CEO, CFO, CNO, and Quality Manager) from each of the 35 CAHs to discuss relevant issues, network, and disseminate information.

EXHIBITOR PACKAGES

Includes the Bronze Package PLUS:

GOLD
\$2250

- Recognition as **GOLD** Sponsor
- **2 Additional** Complimentary Registrations
- Recognition as a **BREAKFAST SPONSOR**
- **One** Pre-Recorded Video (up to 2 minutes) that will be included in the Safe Travels Email before the event

SILVER
\$1750

Includes the Bronze Package PLUS:

- Recognition as **SILVER** Sponsor
- **1 Additional** Complimentary Registration
- Recognition as **SNACK/BREAK SPONSOR**

BRONZE
\$1350

- Recognition as **BRONZE** Sponsor
- **1** Complimentary Registration
- Participant List before the event
- **1** Exhibit Table
- Meals Included



Charging Station - \$750

(1 Sponsorship Available)

Your logo will be displayed prominently by each charging station for maximum visibility!

Official Conference App - \$650

(Limited Sponsorships Available)

Keep your brand in front of this year's attendees, as they share photos, engage in live chat, and keep up to date on the agenda through the app!



Entertainment Sponsor - \$500

(Limited Sponsorships Available)

Have your logo placed prominently near the musicians, logo recognition on CAH slides, and have your organization officially announced during the reception.

Consider becoming an exhibiting or sponsorship partner at the 2024 Critical Access Hospital (CAH) Conference.

Get your organization's brand in front of C-Level (CEO, CFO, CNO, Quality Manager) decision makers from Michigan Critical Access Hospitals and take advantage of networking opportunities throughout the conference!

There are exhibitor tables to increase your visibility. You can also sponsor charging stations with your brand logo and QR code, feature your logo on the Conference App to showcase your brand to participants on their mobile devices, or support Thursday evening's networking reception musical entertainment.

Click Here for Partnership Registration



Upcoming MCRH Educational Events

Grand Rounds:

September 5, 2024, 12-1 PM EST

Pediatrics Grand Rounds: Understanding Adverse Childhood Experiences (ACEs)

Speaker: Mary Neumaier, RD & ACEs Master Trainer

[Register Here](#)

CE Provided for Social Workers, Nurses, Physicians, and Community Health Workers

September 17, 2024, 12-1 PM EST

Special Topics Grand Rounds: Advanced Care Planning

Speaker: Amy Bailey, LMSW

[Register Here](#)

CE Provided for Social Workers, Nurses, Physicians, and Community Health Workers

Project ECHO:

September 18, 12-1 PM EST

Update on STDs for Primary Care Providers

Speaker: Dr. Peter Gulick

[Register Here](#)

CE Provided

EMS:

October 9, 2024, 6-7 PM EST

Getting Paid for MIH and CIP Programs

Speaker: Maggie Adams, EMS Financial Services

[Register Here](#)

CE Provided

Additional Resources

Here are some topics impacting the RHC Community in Michigan this month.

- [Medicaid Bulletin MMP 24-20 discusses Children's Health Insurance Program Reauthorization Act of 2009 \(CHIPRA\)](#)
- [The Michigan Health Council \(MHC\) Offers Five Virtual One-Hour Implicit Bias Training Courses](#)
- [HRSA Payment Program for RHC Buprenorphine-Trained Providers](#)

COVID-19 Vaccine Updates and Resources

This a reminder that COVID-19 is still having an impact on our rural neighbors and those providing care and solutions. **Please click on the links below for important information regarding the latest on vaccines, boosters, testing, and other recommendations:**

- **RESOURCE:** [Updates to Coverage for COVID-19 Tests](#)
- **RESOURCE:** [One Stop Online for COVID Prevention and Treatment in Every County](#)
- **RESOURCE:** [COVID-19 Impact on Emergency Preparedness for RHCs](#)
- **RESOURCE:** [The Implications of Long COVID for Rural Communities](#)
- **UPDATE:** [MDHHS Medicaid Policy Bulletins](#)
- **UPDATE:** [MDHHS L-Letters Guidance](#)
- **ONGOING:** [Understanding the Federal COVID-19 Vaccine Mandates: Practical Considerations for Covered Employers](#)

A SPECIAL THANK YOU TO MCRH'S 2024 ORGANIZATIONAL SPONSORS



NATIONAL KIDNEY
FOUNDATION®

of Michigan

**HALL
RENDER**
KILLIAN HEATH & LYMAN

h s a
health services associates

UltraGroup

EideBailly®

**DESIGN
COLLABORATIVE**

People-first places.

MAAS
MICHIGAN ASSOCIATION OF AMBULANCE SERVICES

CELEBRATING
75
YEARS
Wolgast
CORPORATION

Visit our
website

**Please visit MCRH's Social Media Channels for more
news and information:**



[Click to Subscribe to the RHC Monthly Bulletin](#)

Trouble viewing this email? Contact siwekdou@msu.edu for help

All information in the RHC Monthly Bulletin is current as of the date sent and is subject to change

Michigan Center For Rural Health | 909 Wilson Road B-218 W Fee Hall Michigan State
University | East Lansing, MI 48824 US

[Unsubscribe](#) | [Constant Contact Data Notice](#)



Try email marketing for free today!