

Michigan Rural Health Clinic



Monthly Bulletin

Volume 5, Issue 10:
October 2023



A Few Words From Jill:

I recently had the distinct honor to deliver a Keynote Presentation on Quality Improvement Imperatives for Rural Health Clinics at the National Rural Health Association's Rural Health Clinic and Critical Access Hospital Conference in Kansas City.

During my presentation, I discussed how Quality Improvement (QI) activities are becoming standard practice in Rural Health Clinics. I also spoke about several existing barriers to QI programming, including inadequate staffing, difficulties in data collection, and effective QI structure.

By the end of my presentation, I hoped attendees gathered valuable information in the form of these main takeaways:

- Describe the four key areas of a Plan-Do-Study-Act (PDSA)
- Recognize the barriers and solutions to QI programming
- Identify helpful interventions to assist in different chronic diseases

I am providing **my full presentation here** for your review and I hope you will find the information to be a useful tool and share it with your RHC colleagues.

We are proud to provide valuable support to Michigan's 230 Rural Health Clinics, and we are honored to serve as your trusted resource and advocate for organizational improvement.

As always, please feel free to contact me if you have any questions or need any guidance (oster35@msu.edu).

Thanks,
Jill

**MDHHS Recommends Getting Vaccinated
for Flu, COVID-19 and RSV**



The Michigan Department of Health and Human Services (MDHHS) is recommending residents get the flu, COVID-19, and RSV vaccines to protect against respiratory viruses this upcoming season.

Getting vaccinated is critical because flu, COVID-19, and RSV frequently spread at the same time of year. Residents can get their COVID-19 vaccine at the same time as the flu vaccine and RSV vaccine if they are eligible. Vaccinations are safe, effective strategies to protect residents, their families, and communities from illness.

“With the addition of COVID-19 to respiratory illness season during fall and winter, it is important to use tools to prevent getting sick and spreading illness, which includes getting safe and effective vaccines,” said Dr. Natasha Bagdasarian, MDHHS chief medical executive. “Flu, COVID-19, and RSV vaccines are available in many convenient locations, from primary care providers to local pharmacies, and you can receive them at the same time.”

Most Michigan residents can still get a COVID-19 vaccine for free. For people with health insurance, most plans will cover the COVID-19 vaccine at no cost. Michigan residents who don’t have health insurance or have health plans that do not cover the cost can reach out to a health care provider or local pharmacy participating in the CDC’s **Bridge Access Program**, their local health department, or visit **Vaccines.gov** for additional information on ways to obtain a free vaccine.

Children eligible for the **Vaccines for Children** program also may receive the vaccine from a provider enrolled in that program.

To find a vaccine location near you, including Bridge Access Providers, visit **Vaccine Finder**.

Behavioral Health Lunch & Learn: Building and Maintaining a Supportive Community in the Workplace - October 19, 2023

NORTHWEST MICHIGAN
**Behavioral
Health
Initiative**



Join the Behavioral Health Initiative’s Retain Behavioral Health Providers Action

Team as they host their fifth virtual Lunch and Learn event that will address how to effectively build and maintain a supportive community in the workplace to help reduce staff burnout and increase retention.

Attendees can expect to:

- Hear from agency leaders and learn about the best practices they have implemented to build and maintain a supportive community in their organization
- Discuss additional resources that may be needed across the region to help build or maintain supportive communities within organizations
- Leave with a conversation guide that can be used by agency leaders and supervisors to help facilitate difficult, yet important, discussions around necessary supports and a sense of community in the workplace to help reduce burnout and increase employee retention and engagement

Click below to register for the Lunch & Learn event taking place on Thursday, October 19, from 12 - 1 PM.

[Click Here to Register](#)

[Click Here to Download the Healthy Workplaces = Thriving Employees Toolkit](#)

WEBINAR: Driving Employee Engagement Through Tactical Approach of Leader Rounding - October 24, 2023



Join the upcoming NRHA educational webinar focused on the strategic use of Leader Rounding to transform rural healthcare. Discover how this practice can drive cultural change and improve overall care quality in rural healthcare settings. The webinar takes place on Tuesday, October 24.

In this informative webinar, participants will:

Explore Leader Rounding in Rural Healthcare: Understand the significance of Leader Rounding and its impact on rural healthcare.

Learn Effective Practices: Discover practical strategies to boost employee engagement and leadership development in rural healthcare organizations.

Cultural Transformation: Gain insights into using Leader Rounding as a tool for fostering cultural change within rural healthcare settings.

This webinar will provide real-world examples and actionable strategies to enhance the quality, operational efficiency, and financial performance of rural healthcare institutions.

Don't miss this opportunity to be part of an enlightening discussion that can empower rural healthcare organizations to excel in the face of unique challenges.

Register today and be prepared to lead your organization toward a brighter, more sustainable future in rural healthcare.

[Click Here to Register](#)

WEBINAR: Navigating Drug Formulary and Prior Authorization Challenges - November 6, 2023



**American
Heart
Association.**

Please join the upcoming American Heart Association webinar, Unlocking Medication Access: Navigating Drug Formulary and Prior Authorization Challenges, covering the navigation of drug formularies and prior authorization challenges in the management of diabetes.

Dr. Michelle Chu will address cost issues related to prescribing diabetes medications.

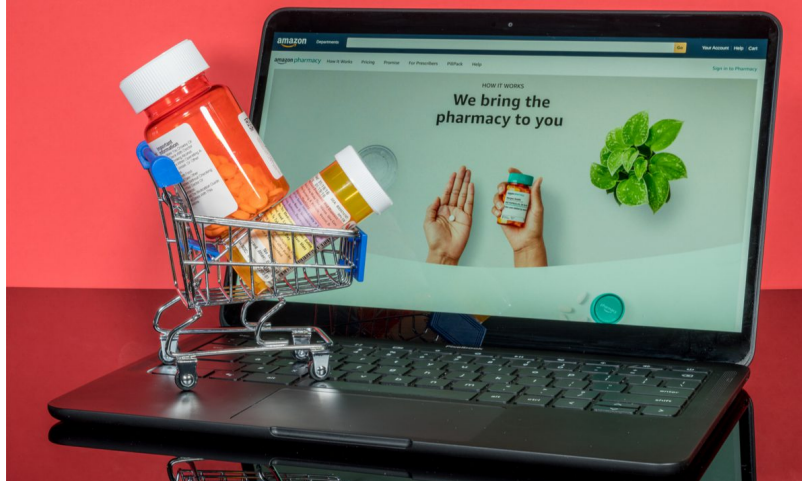
Participants will learn:

- Describe the purpose and process of formulary.
- Discuss benefits and barriers to prior authorization.
- Explain how different entities are involved in drug cost.
- Summarize resources including pharmacists to help with patient's access to medications.

The webinar will occur on Monday, November 6, from 12 - 1 PM EST.

[Click Here for More Information and to Register](#)

Opinion: Will Amazon and Walmart Replace Our Hospitals?



NOTE: This excerpt of an Op/Ed by Dexcare CEO, Derek Streat, appeared in the September 27 issue of Newsweek.

Virtual care via Amazon has given people access to doctors and nurses to assess symptoms, prescribe medicine, and get referrals. In rural America, most residents also live near a Walmart, which could make the retail giant's entry into the health care market another way to increase access.

This comes as hospitals continue to struggle financially, with Texas recently offering **\$4.5 million in grant opportunities** for four hospitals in the state that converted to rural emergency hospitals, and one county without a hospital in rural Tennessee **relying on EMS and telehealth** to fill gaps in care.

NRHA has curated an advocacy campaign so you can **urge Congress to invest in rural health infrastructure** including critical facilities.

[Click Here to Read the Full Newsweek Article](#)

NRHA Advocacy Resources to Help Bolster Workforce Assisting Those Who Lost Medicaid



The National Rural Health Association (NRHA) has curated an advocacy campaign to **urge Congress to invest in a robust rural health workforce**. **NRHA's Career Center is a helpful resource** for qualified health care professionals and fulfilling careers.

Recent CMS data show 72 percent of people who have lost Medicaid coverage since states began the unwinding process were **disenrolled for procedural reasons**, not because they were no longer eligible.

Additionally, physician assistants in Alaska are concerned that a proposed rule would **create unnecessary barriers and restrictions** to their practice and worsen workforce shortages, and the Wyoming Rural Health Institute recently launched a **community health worker training program** to fill gaps in care access.

[Click to Read More](#)

Free Well Water Testing Now Available for Michigan Residents



The Department of Environment, Great Lakes, and Energy (EGLE) is excited to announce a special program to help Michigan families know the quality of their well water. EGLE and local health departments (LHD) are working together to ensure that safe drinking water is a priority for Michigan families.

Last year, the Michigan Legislature appropriated \$5 million to provide free well water testing for Michigan residents who rely on a household or private well for their drinking water. Water from private wells may sometimes not be safe to drink. EGLE and the LHDs want to help families know if their water is safe to drink, and this free well water testing will help get them that answer.

If you have a private well and you want to know if your water is safe to drink, here is what you can do:

- Talk to your LHD. They can tell you if there is anything special you need to know about the water in your area.
- **Go to the [EGLE website gov/EGLEPrivateWells](https://www.egle.state.mi.us/EGLEPrivateWells).** Here, you can add your information to ask for a water test. You will also learn more about how to collect a water sample to send to the laboratory.
- Don't worry if you are not sure what the laboratory results mean – your LHD will help you understand the results and will guide you on the next steps, if necessary.

This free testing program is your first step in knowing if the water you drink from your private well is safe, and what steps to take if an issue is found.

NHSC Students to Service Loan Repayment Program - Apply by December 7, 2023



The National Health Service Corps (NHSC) Students to Service Loan Repayment Program offers up to \$120,000 in tax-free loan repayment assistance to students in the last year of medical, nursing, or dental school.

In return, participants provide at least three years of service at an NHSC-approved site in a designated Health Professional Shortage Area. For the first time, an additional \$40,000 is available to physicians specializing in obstetrics, gynecology, or family medicine physicians who practice obstetrics regularly, as well as certified nurse midwives.

Apply now through Thursday, December 7, at 7:30 p.m. ET.

[Click Here for Full Program Details and Useful Resources](#)

Apply for the Bill Finerfrock Health Policy Fellowship - Deadline is January 5, 2024



**NATIONAL ASSOCIATION OF
RURAL HEALTH CLINICS**

Apply today for the 2024 Bill Finerfrock Health Policy Fellowship. This program is designed for mid-career professionals with experience ranging from billing, coding, office management, and/or clinical care in either the RHC setting or a rural health care system.

Applicants may either be current rural health professionals or have past experience in rural health and are currently pursuing additional education/training. The fellowship is a personal and professional commitment to making further impacts in rural health practice and policy.

The fellowship requires a full-time, in-person commitment for either a 4-week continuous timeframe, or two, 2-week periods in May, June, or July 2024. The selected candidate will reside in Alexandria, Virginia during the fellowship period and work within the NARHC DC Office, Monday-Friday, 9 a.m.-5 p.m.

Lodging and travel expenses will be fully covered by the program, and a \$8,000 stipend will be provided to the fellow directly. Additionally, the selected fellow's employer will receive a \$2,000 stipend to be used as the organization sees fit in gratitude for its support of the fellow's participation in this program.

During the program, the BFHP Fellow will:

- Participate in NARHC advocacy meetings with the Department of Health and Human Services (HHS) and Capitol Hill staff
- Analyze NARHC educational content for relevancy
- Identify areas of focus for NARHC
- Educate key policymakers on the realities of rural health

The application for the 2024 Bill Finerfrock Health Policy Fellowship Program along with all supporting materials, is due by January 5, 2024, at 11:59 pm ET. Completed applications should be emailed to Sarah.Hohman@narhc.org. Interviews will be conducted in mid-January, and the selected candidate will be notified by mid-February, 2024.

[Click Here to Apply](#)

[Click Here for More Details](#)

Celebrate National Rural Health Day - November 16, 2023



The third Thursday of November is recognized as National Rural Health Day. This year, MCRH, in partnership with the National Organization of State Offices of Rural Health (NOSORH) will be working to increase awareness for rural healthcare and highlighting the efforts and achievements towards advocacy in rural communities.

Visit the MCRH National Rural Health Day website for tools and resources to help your NRHD celebration be a successful one. Our website features:

- A Promotional Toolkit with social media templates, games and activities, and special hashtags to help highlight your NRHD activities and community events
- Key Messaging and Data Points to educate communities about the importance of rural health
- Ideas to help you celebrate
- And much, much more

We cannot wait to showcase all that is happening in celebrating "The Power of Rural" in 2023!

For more information on National Rural Health Day, please contact Doug Siwek at siwekdou@msu.edu.



Upcoming MCRH Educational Events

Grand Rounds:

October 19, 2023, 12- 1 PM EST

Nursing Grand Rounds: Hypertension in Pregnancy

Speaker: Shelly Betancourt, WHNP-BC, and Michelle Becher, DO, FACOOG of Maternal 911 Education System

[Register Here](#)

CE provided for: Nursing

October 25, 2023, 12- 1 PM EST

Psychiatry Grand Rounds: Pediatric Pain Management Strategies

Speaker: Natoshia Cunningham, PhD

[Register Here](#)

CE provided for: Nursing, Social Work, and CHWs

December 13, 2023, 12- 1 PM EST

Pharmacy Grand Rounds: Heart Failure - Optimizing Medical Therapy

Speaker: Curtis Smith, PharmD, BCPS

[Register Here](#)

CE provided for: Pharmacist, Pharmacy Technicians, and Nursing

Project ECHO:

October 18, 2023, 12 -1 PM EST

Infectious Disease ECHO: Update on Vaccination for Influenza, COVID-19, and RSV Part 1

Speaker: Dr. Peter Gulick

[Register Here](#)

CME Provided

EMS Webinar:

October 18, 2023, 6 PM EST

EMS Recruitment, Retention & Diversity

Speakers: Jeff Butcher, EMS Program Director, Lansing Community College

[Register Here](#)

CE Provided: 1 Preparatory and 1 Instructional Techniques

November 8, 2023, 6 PM EST

Pre-Hospital Pain Management

Speakers: Allison Biliti, State of Michigan EMS Regional Coordinator

[Register Here](#)

CE Provided: 1 Patient Assessment

RHC October News & Resources

Here are some of the topics impacting the RHC community in Michigan this month.

Click on the BOLD links to read more:

NEW THIS MONTH:

- A new Presidential Advisory from the American Heart Association Defines and Explores **Cardiovascular-kidney-metabolic Syndrome**

- FREE Hypertension Certification for Community Health Workers (and related positions) **Sign up by October 15!**
- Coming in November: **The Great American Smokeout from the American Cancer Society**
- Listen to **NEW "Know Diabetes By Heart" Podcasts** from the American Diabetes Center

RESOURCES:

- Reaching Out to People Who Live In Rural Areas about Medicaid & CHIP Renewals: **Click Here for Updated Resources and Information Document**
- **The Michigan Health Council (MHC) Offers Five Virtual One-Hour Implicit Bias Training Courses**
- **HRSA Payment Program for RHC Buprenorphine-Trained Providers**

COVID-19 Vaccine Updates and Resources

This a reminder that COVID-19 is still having an impact on our rural neighbors and those providing care and solutions. **Please click on the links below for important information regarding the latest on vaccines, boosters, testing, and other recommendations:**

- **NEW:** New Covid Booster Approved and an Update on When Will it Arrive in Michigan
- **RESOURCE:** Updates to Coverage for COVID-19 Tests
- **RESOURCE:** CMS Recinds COVID-19 Health Care Staff Vaccination Requirements
- **RESOURCE:** RHC Vaccine Confidence News and Information - UPDATED
- **RESOURCE:** One Stop Online for COVID Prevention and Treatment in Every County
- **RESOURCE:** COVID-19 Impact on Emergency Preparedness for RHCs
- **RESOURCE:** The Implications of Long COVID for Rural Communities
- **UPDATE:** MDHHS Medicaid Policy Bulletins
- **UPDATE:** MDHHS L-Letters Guidance
- **ONGOING:** Understanding the Federal COVID-19 Vaccine Mandates: Practical Considerations for Covered Employers

**A Special
Thank You to
MCRH's 2023
Organization
Sponsors:**



**Visit our
website**

Please visit MCRH's Social Media Channels for more news and information:



[Click to Subscribe to the RHC Weekly Bulletin](#)
Trouble viewing this email? Contact siwekdou@msu.edu for help
All information in the RHC Weekly Bulletin is current as of date sent and is subject to change

Michigan Center For Rural Health | 909 Wilson Road, B-218 W Fee Hall, Michigan State
University,
East Lansing, MI 48824

[Unsubscribe siwekdou@msu.edu](#)

[Constant Contact Data Notice](#)

Sent by oester35@msu.edu powered by



Try email marketing for free today!