



Monthly Bulletin

Volume 6, Issue 10:
October 2024



A Few Words From Jill:

As another beautiful Michigan fall season is in full swing, I have some exciting news to share!

The Michigan Center for Rural Health (MCRH), in partnership with the National Kidney Foundation of Michigan (NKFM), has launched a new Chronic Kidney Disease (CKD) Toolkit designed specifically for rural healthcare providers.

This toolkit offers vital resources to support the early detection and management of CKD in rural communities where access to specialized nephrology care can be limited.

The toolkit, part of the Medicaid Impact and Expansion 2024 grant initiative, aims to improve the quality of CKD care by providing practical solutions for screening, patient education, and clinical workflow integration. It includes tools and guidelines for CKD testing, patient management, and effective care coordination tailored to address the unique challenges faced by rural providers.

This initiative underscores the importance of empowering rural healthcare professionals with the tools to manage CKD effectively. With Michigan's rural communities facing higher rates of chronic disease and limited healthcare access, this toolkit serves as a critical resource to improve outcomes and reduce the burden of kidney disease across the state.

[*Click here to view the Chronic Kidney Disease Toolkit*](#)

Please email me (oester35@msu.edu) if you have any questions.

Thanks,
Jill

**Updated COVID-19 Vaccine Available
and Recommended for Michigan
Residents Six Months and Older**

Updated 2024-2025 COVID-19 vaccine is recommended for ages 6 months and older

The vaccine closely targets current variants. The CDC recommends everyone ages 6 months and older receive a 2024-2025 COVID-19 vaccine if you have not done so already.
Contact your health care provider to discuss specific recommendations.



Michigan Department of Health & Human Services

For help finding a vaccination site, visit [Vaccines.gov](https://www.vaccines.gov).

The Michigan Department of Health and Human Services (MDHHS) recommends that residents get flu, COVID-19, and RSV vaccines to protect themselves and their communities against respiratory viruses during this upcoming fall and winter seasons.

This recommendation follows the recent authorization by the Food and Drug Administration (FDA) and the U.S. Centers for Disease Control and Prevention Advisory Committee on Immunization Practices recommendation for the 2024-2025 COVID-19 vaccines.

The updated vaccines are expected to provide protection against severe COVID-19 disease from currently circulating variants. The COVID-19 vaccine can be given with other vaccines, including flu and RSV vaccines.

[Click Here to Learn More](#)

[Click Here to Learn More About Seasonal Respiratory Illnesses From MDHHS](#)

Medicaid Health Plan Changes Went Into Effect October 1



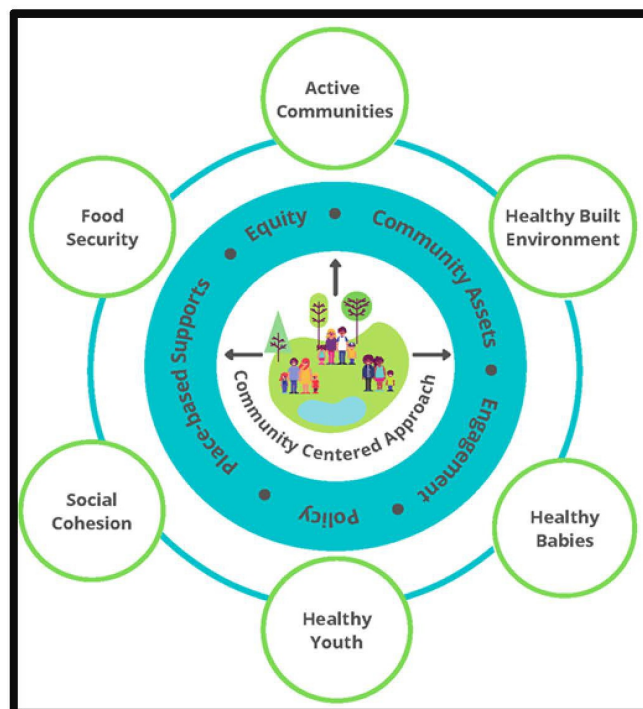
The Michigan Department of Health and Human Services (MDHHS) has awarded Comprehensive Health Care Program contracts for Michigan's Medicaid health plans. These plans serve nearly 2 million Michigan residents who receive coverage through Medicaid and the Healthy Michigan Plan.

The five-year contracts, which include three one-year optional extensions, went into effect Tuesday, October 1. Contracts continue to be awarded based on the state's 10 Prosperity Regions. All nine of Michigan's current Medicaid health plans submitted proposals and were awarded contracts.

With these changes, beneficiaries currently enrolled with a health plan leaving a region will be affected. MDHHS has developed plans to ensure that individuals whose health plan is leaving a region are properly notified and can transition to another plan that will hold a contract within their county of residence.

[Click Here to View the Plan Changes by Each Region](#)

MDHHS Seeking Proposals for Healthy Community Zones Funding Opportunity Designed to Reduce Health Disparities



The Michigan Department of Health and Human Services (MDHHS) is seeking proposals for Healthy Community Zones to be developed in Chippewa and Saginaw counties and the City of Detroit.

Healthy Community Zones aim to reduce racial health disparities by supporting community-led initiatives in food security, built environments, healthy children and youth, and social cohesion. This initiative will provide funding to communities disproportionately affected by chronic diseases, poor health outcomes, food insecurity, and physical inactivity.

The funding will be available to new or existing programs that aim to do one or more of the following:

- Increase food security.
- Create active communities and healthy built environments – physical or man-made structures where people live, work, learn, and play.
- Support healthy, thriving children and youth.
- Enhance social cohesion – the connections between residents, organizations - and the community as a whole.

Project director requests to access the application through EGRAMS are due by 5 p.m., Wednesday, Nov. 13.

Grant applications for the Healthy Community Zones program RFP must be submitted electronically through EGrAMS by 3 p.m., Wednesday, Nov. 20.

[Click Here to Visit the MDHHS Healthy Community Zones Website for More Information](#)

MDARD Announces Grant Opportunity Underserved, Value-Added, and Regional Food Systems Grant Program Across Michigan



The Michigan Department of Agriculture and Rural Development (MDARD) is now accepting applications for the latest round of Underserved, Value-Added, and Regional Food Systems grants.

The Underserved, Value-Added, and Regional Food Systems Grant Program is designed to promote the expansion of value-added agriculture production and processing, develop food systems and access to healthy food, and expand underserved business development within the state to enhance Michigan's food and agriculture industry. These grants will support the state's agri-food business and farming operations.

The maximum grant award is \$100,000 per proposal, with a minimum 30% match or a reduced 15% match for underserved entities. MDARD is accepting proposals for value-added agricultural processing, underserved development, regional food systems, and efforts to expand access to healthy food in Michigan.

The department will host an informational webinar on October 15 from 10:00 a.m. to 11:30 a.m. via the Microsoft Teams virtual platform. No registration will be required.

Proposals must be received by 5:00 p.m. (EST) on October 29, 2024.

[Click Here for More Information About the Grant Program and How to Join the October 15 Webinar](#)

Register Now: Rural Health Clinical Congress Fall 2024



Saturday, November 23, 2024
Broadcast Starts at 8:00 AM CT

[REGISTER BELOW](#)

The RME Collaborative invites you to attend the Rural Health Clinical Congress Fall 2024 on Saturday, November 23.

This free, multi-topic, interactive CME/CE conference is designed for clinicians serving patients from rural and underserved areas. The live broadcast begins at 9:00 a.m. ET and offers a unique opportunity to earn FREE CME/CE credits, including pharmacology credits for nurses.

Why Attend?

- **Diverse Topics:** Sessions will cover important health issues, including asthma, atopic dermatitis, nasal polyps, Alzheimer's Disease, and more.
- **Expert Insights:** Learn evidence-based recommendations from expert faculty.
- **Interactive Experience:** Participate in live polls and ask questions in real-time to gain practical insights tailored to the unique needs of patients in rural and underserved areas.

[Click Here to Register](#)

Cardiovascular Disease: Talk with Your Patients About Screening



Millions of people in the U.S. have high cholesterol, which increases their risk for heart disease and stroke (see CDC). Now is the perfect time to talk with your patients about cardiovascular disease screening and managing their cholesterol levels.

Medicare covers cardiovascular disease screening tests, and your patients pay nothing if you accept the assignment. Find out when your patient is eligible for a screening. If you need assistance, contact your eligibility service provider.

Please click on the following links for more information:

- [Million Hearts® website](#)
- [Hypertension \(PDF\)](#), [Stroke \(PDF\)](#), and [Heart Failure \(PDF\)](#) data snapshots: Learn about disparities among Medicare patients
- [Cardiovascular disease screenings](#): Get information for your patients

Limited 2024 Critical Access Hospital Conference Partnerships Still Available



2024 Michigan Critical Access Hospital Conference

November 7-8, 2024, Park Place – Traverse City, MI

Why Exhibit: The Michigan Critical Access Hospital Conference provides the single most targeted opportunity to reach C-level executives with your organization's message, products, services, and educational outreach efforts. MCRH invites three guests (CEO, CFO, CNO, and Quality Manager) from each of the 35 CAHs to discuss relevant issues, network, and disseminate information.

EXHIBITOR PACKAGES

Includes the Bronze Package PLUS:

GOLD
\$2250

- Recognition as **GOLD** Sponsor
- **2 Additional** Complimentary Registrations
- Recognition as a **BREAKFAST SPONSOR**
- **One** Pre-Recorded Video (up to 2 minutes) that will be included in the Safe Travels Email before the event

SILVER
\$1750

Includes the Bronze Package PLUS:

- Recognition as **SILVER** Sponsor
- **1 Additional** Complimentary Registration
- Recognition as **SNACK/BREAK SPONSOR**

BRONZE
\$1350

- Recognition as **BRONZE** Sponsor
- 1 Complimentary Registration
- Participant List before the event
- 1 Exhibit Table
- Meals Included



Charging Station - \$750

(1 Sponsorship Available)

Your logo will be displayed prominently by each charging station for maximum visibility!

Official Conference App - \$650

(Limited Sponsorships Available)

Keep your brand in front of this year's attendees, as they share photos, engage in live chat, and keep up to date on the agenda through the app!



Entertainment Sponsor - \$500

(Limited Sponsorships Available)

Have your logo placed prominently near the musicians, logo recognition on CAH slides, and have your organization officially announced during the reception.

Consider becoming an exhibiting or sponsorship partner at the 2024 Critical Access Hospital (CAH) Conference.

Get your organization's brand in front of C-Level (CEO, CFO, CNO, Quality Manager) decision makers from Michigan Critical Access Hospitals and take advantage of valuable networking opportunities throughout the conference!

There are exhibitor tables to increase your visibility. You can also sponsor charging stations with your brand logo and QR code, feature your logo on the Conference App to showcase your brand to participants on their mobile devices, or support Thursday evening's networking reception musical entertainment.

[Click Here for Partnership Registration](#)



Upcoming MCRH Educational Events

Grand Rounds:

October 22, 2024, 12-1 PM EST

Special Topics Grand Rounds: Ethics In Pregnancy

Speaker: Michelle Becher, DO & Shelly Betancourt, WHNP-BC

[Register Here](#)

CE Provided for Social Workers, Nurses, Physicians, and Community Health Workers

October 24, 2024, 12-1 PM EST

Pediatrics Grand Rounds: A Brief Guide to Cannabis for the Primary Care Provider

Speaker: Brittany Tayler, MD, FAAP

[Register Here](#)

CE Provided for Social Workers, Nurses, Physicians, and Community Health Workers

Project ECHO:

October 16, 12-1 PM EST

Update on Influenza and RSV for Primary Care Providers

Speaker: Dr. Peter Gulick

[Register Here](#)

CE Provided

October 29, 12-1 PM EST

One Health ECHO: Leveraging Human, Animal, and Environmental Health Partners to Keep Michigan Healthy Series #4

Speaker: TBD

[Register Here](#)

CE Provided

EMS:

November 13, 2024, 6-7 PM EST

EMS Team Dynamics and Accountability

Speaker: Scott Moore, Moore EMS Consulting

[Register Here](#)

CE Provided

Additional Resources

Here are some topics impacting the RHC Community in Michigan this month.

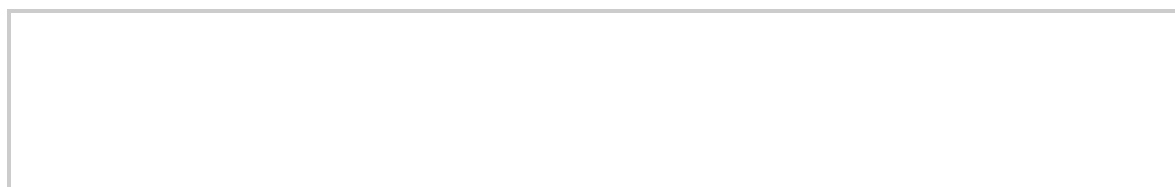
- [Mpox Clade I DRC Outbreak Updates and Mpox Testing](#)
- [Now Open: Students to Service Loan Repayment Program](#)
- [The Michigan Health Council \(MHC\) Offers Five Virtual One-Hour Implicit Bias Training Courses](#)
- [HRSA Payment Program for RHC Buprenorphine-Trained Providers](#)

COVID-19 Vaccine Updates and Resources

This a reminder that COVID-19 still impacts our rural neighbors and those providing care and solutions. **Please click on the links below for important information regarding the latest on vaccines, boosters, testing, and other recommendations:**

- **NEW:** [MDHHS Reminds Michigan Residents About Available COVID-19 Testing Options](#)
- **RESOURCE:** [Updates to Coverage for COVID-19 Tests](#)
- **RESOURCE:** [One Stop Online for COVID Prevention and Treatment in Every County](#)
- **RESOURCE:** [COVID-19 Impact on Emergency Preparedness for RHCs](#)
- **RESOURCE:** [The Implications of Long COVID for Rural Communities](#)
- **UPDATE:** [MDHHS Medicaid Policy Bulletins](#)
- **UPDATE:** [MDHHS L-Letters Guidance](#)
- **ONGOING:** [Understanding the Federal COVID-19 Vaccine Mandates: Practical Considerations for Covered Employers](#)

**A SPECIAL THANK YOU TO MCRH'S
2024 ORGANIZATIONAL SPONSORS**





NATIONAL KIDNEY
FOUNDATION®

of Michigan



**Visit our
website**

**Please visit MCRH's Social Media Channels for more
news and information:**



[Click to Subscribe to the RHC Monthly Bulletin](#)

Trouble viewing this email? Contact siwekdou@msu.edu for help

All information in the RHC Monthly Bulletin is current as of the date sent and is subject to change

[Unsubscribe](#) | [Constant Contact Data Notice](#)



Try email marketing for free today!